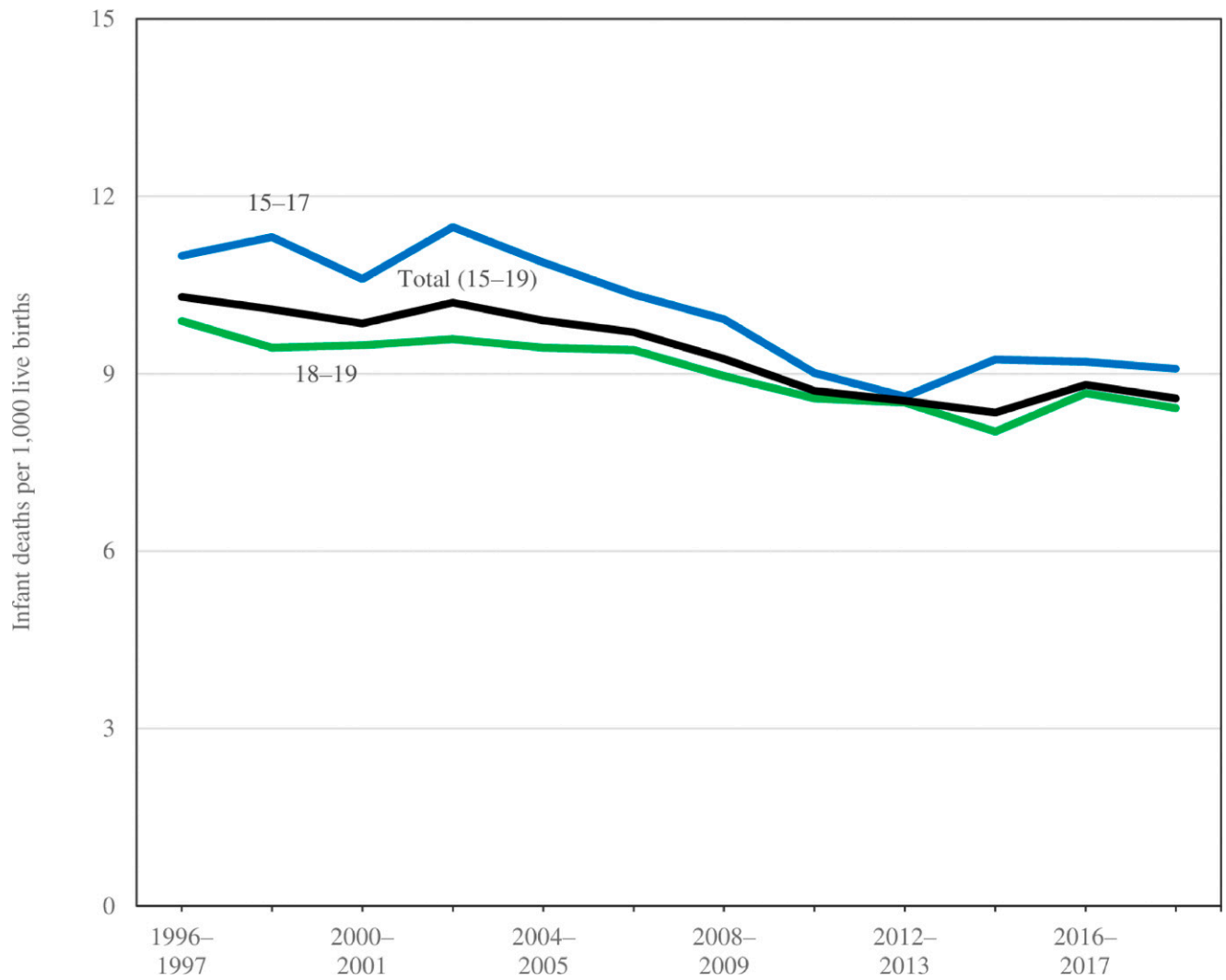


## Supplemental Information



### SUPPLEMENTAL FIGURE 4

Trends in mortality rates for infants of teens aged 15 to 19 (total), 15 to 17, and 18 to 19: United States, 1996–1997 through 2018–2019. Source: NCHS, NVSS, linked birth and infant death file.

**SUPPLEMENTAL TABLE 4** Number of Deaths and Mortality Rates for Infants Born to Teens Aged 15 to 19 by Maternal Age Group, Maternal Urbanization Level, and Maternal Race and Ethnicity: United States, 1996–1997 and 2018–2019

Characteristic	1996–1997			2018–2019		
	Infant Deaths, <sup>a</sup> <i>n</i>	Births, <i>n</i>	Rate <sup>b</sup>	Infant Deaths, <sup>a</sup> <i>n</i>	Births, <i>n</i>	Rate <sup>b</sup>
Aged 15–19						
Large central counties						
White, non-Hispanic	743	74 683	9.95	120	14 096	8.51
Black, non-Hispanic	1549	111 066	13.95 <sup>c</sup>	392	30 919	12.68 <sup>c</sup>
Hispanic or Latina	842	119 860	7.02 <sup>d</sup>	310	51 082	6.07 <sup>d</sup>
Large fringe counties						
White, non-Hispanic	741	86 360	8.58	182	23 299	7.81
Black, non-Hispanic	520	37 535	13.85 <sup>c</sup>	153	13 657	11.20 <sup>c</sup>
Hispanic or Latina	223	28 628	7.79	126	22 561	5.58 <sup>d</sup>
Medium and small counties						
White, non-Hispanic	1607	148 096	10.85	453	49 130	9.22
Black, non-Hispanic	1028	67 973	15.12 <sup>c</sup>	282	26 144	10.79
Hispanic or Latina	491	66 472	7.39 <sup>d</sup>	283	41 636	6.80 <sup>d</sup>
Rural counties						
White, non-Hispanic	1207	81 371	14.83	339	34 080	9.95
Black, non-Hispanic <sup>e</sup>	453	33 127	13.67	132	9541	13.84 <sup>c</sup>
Hispanic or Latina <sup>e</sup>	152	18 958	8.02 <sup>d</sup>	104	12 497	8.32
Aged 15–17						
Large central counties						
White, non-Hispanic	275	24 650	11.16	21	2823	7.44
Black, non-Hispanic <sup>e</sup>	641	47 253	13.57 <sup>c</sup>	103	8081	12.75 <sup>c</sup>
Hispanic or Latina	381	48 765	7.81 <sup>d</sup>	96	14 038	6.84
Large fringe counties						
White, non-Hispanic <sup>e</sup>	273	28 796	9.48	39	4461	8.74
Black, non-Hispanic <sup>f</sup>	220	15 614	14.09 <sup>c</sup>	29	3328	8.71
Hispanic or Latina	107	11 329	9.44	35	5990	5.84
Medium and small counties						
White, non-Hispanic <sup>e</sup>	599	53 736	11.15	114	10 252	11.12
Black, non-Hispanic	438	28 641	15.29 <sup>c</sup>	71	6758	10.51
Hispanic or Latina <sup>e</sup>	215	27 510	7.82 <sup>d</sup>	85	11 769	7.22
Rural counties						
White, non-Hispanic <sup>e</sup>	419	39 452	10.62	86	8742	9.84
Black, non-Hispanic <sup>e</sup>	200	14 257	14.03 <sup>c</sup>	35	2565	13.65
Hispanic or Latina <sup>e</sup>	64	8047	7.95	30	3477	8.63
Aged 18–19						
Large central counties						
White, non-Hispanic <sup>e</sup>	468	50 033	9.35	99	11 273	8.78
Black, non-Hispanic	909	63 813	14.24 <sup>c</sup>	290	22 838	12.70 <sup>c</sup>
Hispanic or Latina	461	71 095	6.48 <sup>d</sup>	213	37 044	5.75 <sup>d</sup>
Large fringe counties:						
White, non-Hispanic <sup>e</sup>	468	57 564	8.13	143	18 838	7.59
Black, non-Hispanic	300	21 921	13.69 <sup>c</sup>	124	10 329	12.01 <sup>c</sup>
Hispanic or Latina <sup>e</sup>	115	17 299	6.65	91	16 571	5.49 <sup>d</sup>
Medium and small counties						
White, non-Hispanic <sup>e</sup>	1008	108 644	9.28	338	40 388	8.37
Black, non-Hispanic	590	39 332	15.00 <sup>c</sup>	210	19 386	10.83 <sup>c</sup>
Hispanic or Latina <sup>e</sup>	277	38 962	7.11 <sup>d</sup>	198	29 867	6.63 <sup>d</sup>
Rural counties						
White, non-Hispanic	788	81 371	9.68	254	34 080	7.45
Black, non-Hispanic <sup>e</sup>	253	18 870	13.41 <sup>c</sup>	97	6976	13.90 <sup>c</sup>
Hispanic or Latina <sup>e</sup>	88	10 911	8.07	75	9020	8.31

<sup>a</sup> The number of infant deaths in the linked file are weighted to equal the sum of the linked plus unlinked infant deaths by age at death and state. The number of infant deaths shown in this table have been rounded to the nearest integer.

<sup>b</sup> Infant deaths per 1000 live births. All rates declined significantly throughout the period unless otherwise noted.

<sup>c</sup> Significantly higher than rates for infants of white, non-Hispanic and Hispanic teens.

<sup>d</sup> Significantly lower than rates for infants of white, non-Hispanic and Black, non-Hispanic teens.

<sup>e</sup> Rates did not significantly change during the period.

<sup>f</sup> Rates did not significantly change from 1996–1997 through 2002–2003 and then declined from 2002–2003 through 2018–2019.