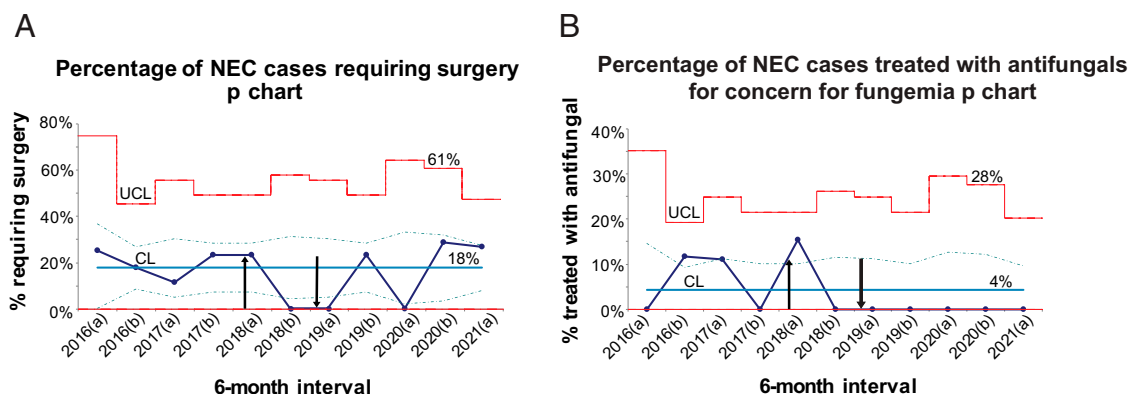


Supplemental Information



SUPPLEMENTAL FIGURE 7

Balancing measures. A, P-chart showing percentage of NEC cases requiring surgery. B, P-chart showing percentage of NEC patients treated with antifungal because of concern for fungemia. Change over time is shown in 6-month periods from January 2016 to June 2021. A = January to June, B = July to December. Dark black arrows represent PDSA cycles. The blue solid line represents the measured mean ratio, and the dashed line represents 1 SD from the mean. CL, control limit; LCL, lower control limit; UCL, upper control limit.

SUPPLEMENTAL TABLE 3 Pre- and Postintervention Changes in Average Antibiotic Days, NPO Days, and Percentage of Patients Treated With Piperacillin/Tazobactam, by NEC Stage, Including Deceased Patients

NEC Bell's Stage (n = 114)	Antibiotic Days			NPO Days			Percentage Treated With Piperacillin/Tazobactam		
	Premean (SD)	Postmean (SD)	P	Premean (SD)	Postmean (SD)	P	Pre %	Post %	P
IA (n = 40)	3.91 (3.85)	2.61 (1.88)	.359	3.50 (2.84)	2.22 (0.88)	.048*	31.8	77.8	.005*
IB (n = 11)	2.00 (0.00)	2.43 (0.79)	.491	1.75 (0.96)	2.00 (0.00)	.279	0.0	71.4	.061
IIA (n = 34)	13.18 (8.95)	7.48 (2.52)	.022*	12.18 (5.95)	7.52 (2.61)	.018*	36.4	82.6	.016*
IIB (n = 8)	15.50 (0.71)	10.33 (3.20)	.107	16.00 (0.00)	11.67 (4.23)	.321	0.0	100.0	.036*
IIIA (n = 12)	10.50 (3.87)	5.63 (5.71)	.113	12.00 (4.55)	6.63 (6.50)	.137	25.0	87.5	.067
IIIB (n = 9)	6.25 (9.85)	15.00 (11.05)	.397	6.00 (9.35)	11.40 (5.86)	.516	25.0	80.0	.21

* P value < .05.