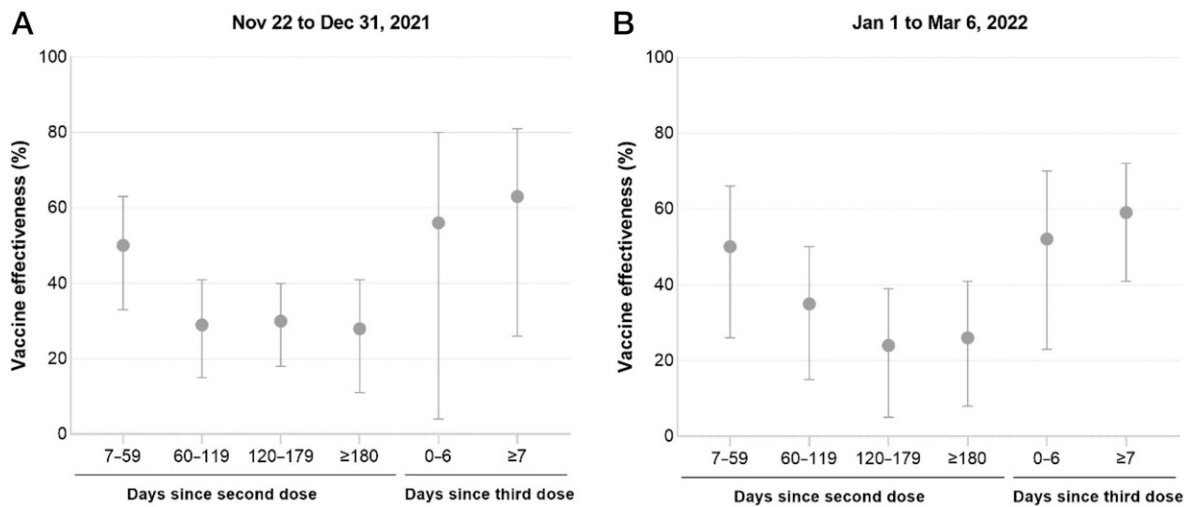


Supplemental Information



SUPPLEMENTAL FIGURE 2

Estimates of vaccine effectiveness against symptomatic infection caused by Omicron during the period November 22, 2021 to March 6, 2022, by time since latest dose, before and after polymerase chain reaction testing restrictions.

Vaccine effectiveness estimates adjusted for age, sex, public health unit region of residence, comorbidities, influenza vaccination status during the 2019/2020 and/or 2020/2021 influenza seasons, positive test result >90 days before index date, week of testing, and neighborhood-level information on median household income, proportion of the working population employed as nonhealth essential workers, mean number of persons per dwelling, and proportion of the population who self-identify as a visible minority.

SUPPLEMENTAL TABLE 1 Number of Omicron and Delta Symptomatic Infections by Laboratory Testing Categorization During the Period November 22, 2021 to March 6, 2022

Classification Criteria	November 22, 2021 to December 31, 2021	January 1, 2022 to March 6, 2022
Omicron confirmed via WGS or SGTF	1966	446
Omicron classified if collection date \geq December 21, 2021 and no or inconclusive SGTF results	3827	3663
Delta confirmed via WGS or SGTF ^a	447	0
Delta classified if collection date <December 3, 2021 and no or inconclusive SGTF results ^a	55	0

WGS, whole genome sequencing; SGTF, S-gene target failure.

^aDelta outcomes were restricted to January 2, 2022 or earlier because of small numbers and limited circulation after that date.

SUPPLEMENTAL TABLE 2 Descriptive Characteristics of Subjects Tested for SARS-CoV-2 With COVID-19-Relevant Symptoms During the Period November 22, 2021 to March 6, 2022
Comparing Omicron Cases and Delta Cases With SARS-CoV-2-Negative Controls

	SARS-CoV-2-Negative, <i>n</i> (%) ^a	Omicron, <i>n</i> (%) ^a	SD ^b	SARS-CoV-2-Negative, <i>n</i> (%) ^a	Delta, <i>n</i> (%) ^a	SD ^b
Total	<i>n</i> = 19 953	<i>n</i> = 9902		<i>n</i> = 17 930	<i>n</i> = 502	
Subject characteristics						
Age, y, mean (SD)	14.41±1.72	14.73±1.72	0.18	14.40±1.72	14.53±1.77	0.07
Male sex, <i>n</i> (%)	10 330 (51.8)	4769 (48.2)	0.07	9436 (52.6)	228 (45.4)	0.14
Any comorbidity, ^c <i>n</i> (%)	5639 (28.3)	2839 (28.7)	0.01	5039 (28.1)	124 (24.7)	0.08
Receipt of 2019–2020 and/or 2020–2021 influenza vaccination, <i>n</i> (%)	5606 (28.1)	2444 (24.7)	0.08	5067 (28.3)	70 (13.9)	0.36
Public health unit region, ^d <i>n</i> (%)						
Central East	1724 (8.6)	625 (6.3)	0.09	1559 (8.7)	64 (12.7)	0.13
Central West	3960 (19.8)	1907 (19.3)	0.01	3688 (20.6)	107 (21.3)	0.02
Durham	1381 (6.9)	764 (7.7)	0.03	1230 (6.9)	27 (5.4)	0.06
Eastern	1315 (6.6)	424 (4.3)	0.10	1230 (6.9)	18 (3.6)	0.15
North	1287 (6.5)	639 (6.5)	0.00	1007 (5.6)	56 (11.2)	0.20
Ottawa	1006 (5.0)	433 (4.4)	0.03	959 (5.3)	11 (2.2)	0.17
Peel	2116 (10.6)	1376 (13.9)	0.10	1899 (10.6)	41 (8.2)	0.08
South West	2265 (11.4)	1200 (12.1)	0.02	1907 (10.6)	97 (19.3)	0.25
Toronto	3186 (16.0)	1505 (15.2)	0.02	2871 (16.0)	48 (9.6)	0.19
York	1638 (8.2)	996 (10.1)	0.06	1518 (8.5)	29 (5.8)	0.10
Household income quintile, ^{d,e} <i>n</i> (%)						
1 (lowest)	2499 (12.5)	1242 (12.5)	0.00	2200 (12.3)	103 (20.5)	0.22
2	2912 (14.6)	1419 (14.3)	0.01	2547 (14.2)	63 (12.5)	0.05
3	3641 (18.2)	1880 (19.0)	0.02	3257 (18.2)	97 (19.3)	0.03
4	4724 (23.7)	2366 (23.9)	0.01	4304 (24.0)	107 (21.3)	0.06
5 (highest)	6126 (30.7)	2956 (29.9)	0.02	5580 (31.1)	127 (25.3)	0.13
Essential workers quintile, ^{d,f} <i>n</i> (%)						
1 (0% to 32.5%)	4900 (24.6)	2198 (22.2)	0.06	4522 (25.2)	62 (12.4)	0.33
2 (32.5% to 42.3%)	5243 (26.3)	2687 (27.1)	0.02	4725 (26.4)	121 (24.1)	0.05
3 (42.3% to 49.8%)	3964 (19.9)	1961 (19.8)	0.00	3551 (19.8)	99 (19.7)	0.00
4 (50.0% to 57.5%)	3151 (15.8)	1699 (17.2)	0.04	2791 (15.6)	106 (21.1)	0.14
5 (57.5% to 100%)	2568 (12.9)	1272 (12.8)	0.00	2240 (12.5)	105 (20.9)	0.23
Persons per dwelling quintile, ^{d,g} <i>n</i> (%)						
1 (0–2.1)	1968 (9.9)	792 (8.0)	0.07	1737 (9.7)	56 (11.2)	0.05
2 (2.2–2.4)	2817 (14.1)	1287 (13.0)	0.03	2456 (13.7)	75 (14.9)	0.04
3 (2.5–2.6)	2731 (13.7)	1168 (11.8)	0.06	2447 (13.6)	85 (16.9)	0.09
4 (2.7–3.0)	5531 (27.7)	2664 (26.9)	0.02	5046 (28.1)	148 (29.5)	0.03
5 (3.1–5.7)	6779 (34.0)	3905 (39.4)	0.11	6143 (34.3)	127 (25.3)	0.20
Self-identified visible minority quintile, ^{d,h} <i>n</i> (%)						
1 (0.0% to 2.2%)	2940 (14.7)	1309 (13.2)	0.04	2571 (14.3)	112 (22.3)	0.21
2 (2.2% to 7.5%)	3469 (17.4)	1528 (15.4)	0.05	3083 (17.2)	111 (22.1)	0.12
3 (7.5% to 18.7%)	4130 (20.7)	1815 (18.3)	0.06	3741 (20.9)	95 (18.9)	0.05
4 (18.7% to 43.5%)	4452 (22.3)	2222 (22.4)	0.00	4062 (22.7)	91 (18.1)	0.11
5 (43.5% to 100%)	4836 (24.2)	2943 (29.7)	0.12	4373 (24.4)	84 (16.7)	0.19
Positive test result >90 d before, <i>n</i> (%)	491 (2.5)	70 (0.7)	0.14	416 (2.3)	0 (0.0)	0.22
Week of test, <i>n</i> (%)						
November 22, 2021 to November 28, 2021	2904 (14.6)	≤5 (≤0.1)	0.58	2904 (16.2)	103 (20.5)	0.11
November 29, 2021 to December 5, 2021	3428 (17.2)	6–10 (0.1)	0.64	3428 (19.1)	114 (22.7)	0.09
December 6, 2021 to December 12, 2021	3648 (18.3)	69 (0.7)	0.63	3648 (20.3)	107 (21.3)	0.02
December 13, 2021 to December 19, 2021	3587 (18.0)	593 (6.0)	0.38	3587 (20.0)	110 (21.9)	0.05
December 20, 2021 to December 26, 2021	2676 (13.4)	1919 (19.4)	0.16	2676 (14.9)	54 (10.8)	0.12
December 27, 2021 to January 2, 2022	1687 (8.5)	3399 (34.3)	0.66	1687 (9.4)	14 (2.8)	0.28
January 3, 2022 to January 9, 2022	430 (2.2)	1003 (10.1)	0.34	—	—	—
January 10, 2022 to January 16, 2022	271 (1.4)	522 (5.3)	0.22	—	—	—
January 17, 2022 to January 23, 2022	235 (1.2)	366 (3.7)	0.16	—	—	—
January 24, 2022 to January 30, 2022	213 (1.1)	360 (3.6)	0.17	—	—	—
January 31, 2022 to February 06, 2022	189 (0.9)	282 (2.8)	0.14	—	—	—
February 7, 2022 to February 13, 2022	186 (0.9)	312 (3.2)	0.16	—	—	—
February 14, 2022 to February 20, 2022	160 (0.8)	372 (3.8)	0.20	—	—	—
February 21, 2022 to February 27, 2022	166 (0.8)	367 (3.7)	0.19	—	—	—
February 28, 2022 to March 6, 2022	173 (0.9)	327 (3.3)	0.17	—	—	—

SUPPLEMENTAL TABLE 2 Continued

	SARS-CoV-2-Negative, <i>n</i> (%) ^a	Omicron, <i>n</i> (%) ^a	SD ^b	SARS-CoV-2-Negative, <i>n</i> (%) ^a	Delta, <i>n</i> (%) ^a	SD ^b
Unvaccinated	1370 (6.9)	831 (8.4)	0.06	1230 (6.9)	289 (57.6)	1.29
Time since second dose, <i>d</i> , <i>n</i> (%)						
7–59	960 (4.8)	194 (2.0)	0.16	902 (5.0)	6 (1.2)	0.22
60–119	3589 (18.0)	1068 (10.8)	0.21	3397 (18.9)	33 (6.6)	0.38
120–179	12 316 (61.7)	5044 (50.9)	0.22	11 772 (65.7)	163 (32.5)	0.70
≥180	1523 (7.6)	2580 (26.1)	0.51	571 (3.2)	9 (1.8)	0.09
Time since third dose, <i>d</i> , <i>n</i> (%)						
0–6	60 (0.3)	68 (0.7)	0.06	20 (0.1)	≤5 (≤1.0)	0.02
≥7	135 (0.7)	117 (1.2)	0.05	38 (0.2)	≤5 (≤1.0)	0.00
Interval between first dose and second dose, <i>n</i> (%)						
Unvaccinated	1370 (6.9)	831 (8.4)	0.06	1230 (6.9)	289 (57.6)	1.29
<35 d (<5 wk)	6961 (34.9)	3373 (34.1)	0.02	6279 (35.0)	86 (17.1)	0.42
35–55 d (5–7 wk)	8743 (43.8)	4290 (43.3)	0.01	7866 (43.9)	98 (19.5)	0.54
≥56 d (≥8 wk)	2879 (14.4)	1408 (14.2)	0.01	2555 (14.2)	29 (5.8)	0.29

^aProportion reported, unless stated otherwise.

^bStandardized differences of >0.10 are considered clinically relevant. Comparison of Omicron cases and SARS-CoV-2 negative controls, and Delta cases and SARS-CoV-2 negative controls. SD, standardized difference.

^cComorbidities include asthma, diabetes, immunocompromising conditions due to underlying diseases or therapy, autoimmune diseases, active cancer, or pediatric complex chronic conditions.

^dThe sum of counts does not equal the column total because of individuals with missing information (≤2.0%) for this characteristic.

^eHousehold income quintile has variable cutoff values in each city/census area to account for cost of living. A dissemination area being in quintile 1 means it is among the lowest 20% of dissemination areas in its city by income.

^fPercentage of people in the area working in the following occupations: sales and service occupations, trades, transport, and equipment operators and related occupations, natural resources, agriculture, and related production occupations, and occupations in manufacturing and utilities. Census counts for people are randomly rounded up or down to the nearest number divisible by 5, which causes some minor imprecision.

^gRange of persons per dwelling.

^hPercentage of people in the area who self-identified as a visible minority (ie, “persons, other than aboriginal peoples, who are non-Caucasian in race or non-white in colour”). Census counts for people are randomly rounded up or down to the nearest number divisible by 5, which causes some minor imprecision.

—, Delta outcomes were restricted to January 2, 2022 or earlier because of small numbers and limited circulation.

SUPPLEMENTAL TABLE 3 Descriptive Characteristics of Subjects Tested for SARS-CoV-2 With COVID-19-Relevant Symptoms During the Period November 22, 2021 to March 6, 2022, Comparing Subjects With 2 Doses, 3 Doses, and Unvaccinated Subjects, Omicron Cases, and SARS-CoV-2-Negative Controls Only

	Unvaccinated, <i>n</i> (%) ^a	2 Doses, <i>n</i> (%) ^a	SD ^b	3 Doses, <i>n</i> (%) ^a	SD ^b
Total	<i>n</i> = 2201	<i>n</i> = 27 274		<i>n</i> = 380	
Subject characteristics					
Age, <i>y</i> , mean (SD)	14.05±1.80	14.54±1.71	0.28	15.49±1.58	0.85
Male sex, <i>n</i> (%)	1191 (54.1)	13 757 (50.4)	0.07	151 (39.7)	0.29
Any comorbidity, ^c <i>n</i> (%)	586 (26.6)	7746 (28.4)	0.04	146 (38.4)	0.25
Receipt of 2019–2020 and/or 2020–2021 influenza vaccination, <i>n</i> (%)	139 (6.3)	7732 (28.3)	0.61	179 (47.1)	1.04
Public health unit region, ^d <i>n</i> (%)					
Central East	201 (9.1)	2115 (7.8)	0.05	33 (8.7)	0.02
Central West	404 (18.4)	5414 (19.9)	0.04	49 (12.9)	0.15
Durham	132 (6.0)	1982 (7.3)	0.05	31 (8.2)	0.08
Eastern	101 (4.6)	1611 (5.9)	0.06	27 (7.1)	0.11
North	168 (7.6)	1704 (6.2)	0.05	54 (14.2)	0.21
Ottawa	60 (2.7)	1370 (5.0)	0.12	9 (2.4)	0.02
Peel	287 (13.0)	3191 (11.7)	0.04	14 (3.7)	0.34
South West	294 (13.4)	3114 (11.4)	0.06	57 (15.0)	0.05
Toronto	385 (17.5)	4239 (15.5)	0.05	67 (17.6)	0.00
York	159 (7.2)	2439 (8.9)	0.06	36 (9.5)	0.08
Household income quintile, ^{d,e} <i>n</i> (%)					
1 (lowest)	536 (24.4)	3175 (11.6)	0.34	30 (7.9)	0.46
2	396 (18.0)	3900 (14.3)	0.10	35 (9.2)	0.26
3	442 (20.1)	5006 (18.4)	0.04	73 (19.2)	0.02
4	401 (18.2)	6589 (24.2)	0.15	100 (26.3)	0.20
5 (highest)	407 (18.5)	8535 (31.3)	0.30	140 (36.8)	0.42
Essential workers quintile, ^{d,f} <i>n</i> (%)					
1 (0% to 32.5%)	274 (12.4)	6711 (24.6)	0.32	113 (29.7)	0.43
2 (32.5% to 42.3%)	458 (20.8)	7364 (27.0)	0.15	108 (28.4)	0.18
3 (42.3% to 49.8%)	477 (21.7)	5384 (19.7)	0.05	64 (16.8)	0.12
4 (50.0% to 57.5%)	479 (21.8)	4315 (15.8)	0.15	56 (14.7)	0.18
5 (57.5% to 100%)	487 (22.1)	3320 (12.2)	0.27	33 (8.7)	0.38
Persons per dwelling quintile, ^{d,g} <i>n</i> (%)					
1 (0–2.1)	273 (12.4)	2453 (9.0)	0.11	34 (8.9)	0.11
2 (2.2–2.4)	385 (17.5)	3650 (13.4)	0.11	69 (18.2)	0.02
3 (2.5–2.6)	257 (11.7)	3584 (13.1)	0.04	58 (15.3)	0.11
4 (2.7–3.0)	573 (26.0)	7517 (27.6)	0.03	105 (27.6)	0.04
5 (3.1–5.7)	686 (31.2)	9890 (36.3)	0.11	108 (28.4)	0.06
Self-identified visible minority quintile, ^{d,h} <i>n</i> (%)					
1 (0.0% to 2.2%)	356 (16.2)	3820 (14.0)	0.06	73 (19.2)	0.08
2 (2.2% to 7.5%)	381 (17.3)	4526 (16.6)	0.02	90 (23.7)	0.16
3 (7.5% to 18.7%)	381 (17.3)	5476 (20.1)	0.07	88 (23.2)	0.15
4 (18.7% to 43.5%)	416 (18.9)	6186 (22.7)	0.09	72 (18.9)	0.00
5 (43.5% to 100%)	641 (29.1)	7087 (26.0)	0.07	51 (13.4)	0.39
Positive test result >90 d before, <i>n</i> (%)	62 (2.8)	494 (1.8)	0.07	≤5 (1.3)	0.11
Week of test, <i>n</i> (%)					
November 22, 2021 to November 28, 2021	248 (11.3)	2657 (9.7)	0.05	≤5 (≤1.3)	0.49
November 29, 2021 to December 5, 2021	273 (12.4)	3162 (11.6)	0.02	≤5 (≤1.3)	0.50
December 6, 2021 to December 12, 2021	292 (13.3)	3421 (12.5)	0.02	≤5 (≤1.3)	0.49
December 13, 2021 to December 19, 2021	251 (11.4)	3917 (14.4)	0.09	12 (3.2)	0.32
December 20, 2021 to December 26, 2021	229 (10.4)	4337 (15.9)	0.16	29 (7.6)	0.10
December 27, 2021 to January 2, 2022	416 (18.9)	4631 (17.0)	0.05	39 (10.3)	0.25
January 3, 2022 to January 9, 2022	135 (6.1)	1282 (4.7)	0.06	16 (4.2)	0.09
January 10, 2022 to January 16, 2022	89 (4.0)	681 (2.5)	0.09	23 (6.1)	0.09
January 17, 2022 to January 23, 2022	56 (2.5)	535 (2.0)	0.04	10 (2.6)	0.01
January 24, 2022 to January 30, 2022	48 (2.2)	512 (1.9)	0.02	13 (3.4)	0.08
January 31, 2022 to February 6, 2022	58 (2.6)	399 (1.5)	0.08	14 (3.7)	0.06
February 7, 2022 to February 13, 2022	40 (1.8)	435 (1.6)	0.02	23 (6.1)	0.22
February 14, 2022 to February 20, 2022	25 (1.1)	483 (1.8)	0.05	24 (6.3)	0.28
February 21, 2022 to February 27, 2022	21 (1.0)	446 (1.6)	0.06	66 (17.4)	0.59
February 28, 2022 to March 6, 2022	20 (0.9)	376 (1.4)	0.04	104 (27.4)	0.82

SUPPLEMENTAL TABLE 3 Continued

	Unvaccinated, <i>n</i> (%) ^a	2 Doses, <i>n</i> (%) ^a	SD ^b	3 Doses, <i>n</i> (%) ^a	SD ^b
Unvaccinated, <i>n</i> (%)	2201 (100)	0 (0.0)	—	0 (0.0)	—
Time since second dose, <i>d</i> , <i>n</i> (%)					
7–59	0 (0.0)	1154 (4.2)	0.30	0 (0.0)	—
60–119	0 (0.0)	4657 (17.1)	0.64	0 (0.0)	—
120–179	0 (0.0)	17 360 (63.7)	1.87	0 (0.0)	—
≥180	0 (0.0)	4103 (15.0)	0.60	0 (0.0)	—
Time since third dose, <i>d</i> , <i>n</i> (%)					
0–6	0 (0.0)	0 (0.0)	—	128 (33.7)	1.01
≥7	0 (0.0)	0 (0.0)	—	252 (66.3)	1.98
Interval between dose 1 and dose 2, <i>n</i> (%)					
Unvaccinated	2201 (100)	0 (0.0)	—	0 (0.0)	—
<35 d, <5 wk	0 (0.0)	10 187 (37.4)	1.09	147 (38.7)	1.12
35–55 d, 5–7 wk	0 (0.0)	12 859 (47.1)	1.34	174 (45.8)	1.30
≥56 d, ≥8 wk	0 (0.0)	4228 (15.5)	0.61	59 (15.5)	0.61

^aProportion reported, unless stated otherwise.

^bStandardized differences of >0.10 are considered clinically relevant. Comparison of subjects who have received 2 or 3 doses with unvaccinated subjects.

^cComorbidities include asthma, diabetes, immunocompromising conditions due to underlying diseases or therapy, autoimmune diseases, active cancer, or pediatric complex chronic conditions.

^dThe sum of counts does not equal the column total because of individuals with missing information (≤1.0%) for this characteristic.

^eHousehold income quintile has variable cutoff values in each city/census area to account for cost of living. A dissemination area being in quintile 1 means it is among the lowest 20% of dissemination areas in its city by income.

^fPercentage of people in the area working in the following occupations: sales and service occupations, trades, transport, and equipment operators and related occupations, natural resources, agriculture, and related production occupations, and occupations in manufacturing and utilities. Census counts for people are randomly rounded up or down to the nearest number divisible by 5, which causes some minor imprecision.

^gRange of persons per dwelling.

^hPercentage of people in the area who self-identified as a visible minority (ie, “persons, other than aboriginal peoples, who are non-Caucasian in race or non-white in colour”). Census counts for people are randomly rounded up or down to the nearest number divisible by 5, which causes some minor imprecision.

SD, standardized difference; —, not applicable.

SUPPLEMENTAL TABLE 4 Estimates of Vaccine Effectiveness Against Symptomatic Infection or Severe Outcomes (Hospitalization or Death) Caused by Omicron or Delta During the Period November 22, 2021 to March 6, 2022, by Time Since Latest Dose

Outcome	Dose Number	Days Since Latest Dose	Vaccinated SARS-CoV-2 Negative Controls, <i>n</i>	Vaccinated Omicron-Positive Cases, <i>n</i>	Vaccine Effectiveness Against Omicron (95% CI)		Vaccine Effectiveness Against Delta (95% CI) ^g	
					Vaccinated SARS-CoV-2 Negative Controls, <i>n</i> ^b	Vaccinated SARS-CoV-2 Delta-Positive Cases, <i>n</i> ^b		
Symptomatic infection	Second dose	7–59 d	960	194	51 (38 to 61)	902	6	97 (94– to 99)
		60–119 d	3589	1068	31 (20 to 41)	3397	33	96 (94– to 97)
		120–179 d	12 316	5044	29 (19 to 38)	11 772	163	94 (92– to 95)
		≥180 d	1523	2580	29 (17 to 38)	571	9	90 (79– to 95)
	Third dose	0–6 d	60	68	56 (34 to 70)	N/A	N/A	N/A
		≥7 d	135	117	62 (49 to 72)	N/A	N/A	N/A
Severe outcomes	Second dose	7–59 d	960	≤5	76 (-10 to 95)	902	0	—
		60–119 d	3589	4-8	83 (55 to 93)	3397	0	—
		120–179 d	12 316	18	82 (64 to 91)	11 772	0	—
		≥180 d	1523	22	88 (77 to 94)	571	0	—
	Overall	≥7 d	18 388	49	85 (74 to 91)	16 642	0	—

Vaccine effectiveness estimates adjusted for: age, sex, public health unit region of residence, comorbidities, influenza vaccination status during the 2019/2020 and/or 2020/2021 influenza seasons, positive test result >90 d before index date, week of testing, and neighborhood-level information on median household income, proportion of the working population employed as nonhealth essential workers, mean number of persons per dwelling, and proportion of the population who self-identify as a visible minority.

^bEstimated to January 2, 2022 only because of small numbers and limited circulation after that date.

N/A, not estimated; —, vaccine effectiveness estimated as 100% based on zero vaccinated test positive cases.

SUPPLEMENTAL TABLE 5 Characteristics of Subjects Tested for SARS-CoV-2 With COVID-19-Relevant Symptoms During the Period November 22, 2021 to March 6, 2022, Before and After Polymerase Chain Reaction Testing Restrictions, Omicron Cases and SARS-CoV-2-Negative Controls Only

	Tested on or Before December 31, 2021 ^a	Tested After December 31, 2021 ^a	SD ^b
Total	<i>n</i> = 23 615	<i>n</i> = 6240	
Subject characteristics			
Age, y, mean (SD)	14.49±1.73	14.60±1.73	0.06
Male sex, <i>n</i> (%)	12 247 (51.9)	2852 (45.7)	0.12
Any comorbidity, ^c <i>n</i> (%)	6671 (28.2)	1807 (29.0)	0.02
Receipt of 2019–2020 and/or 2020–2021 influenza vaccination, <i>n</i> (%)	6489 (27.5)	1561 (25.0)	0.06
Public health unit region, ^d <i>n</i> (%)			
Central East	1955 (8.3)	394 (6.3)	0.08
Central West	4965 (21.0)	902 (14.5)	0.17
Durham	1630 (6.9)	515 (8.3)	0.05
Eastern	1448 (6.1)	291 (4.7)	0.07
North	1158 (4.9)	768 (12.3)	0.27
Ottawa	1262 (5.3)	177 (2.8)	0.13
Peel	2741 (11.6)	751 (12.0)	0.01
South West	2403 (10.2)	1062 (17.0)	0.20
Toronto	3800 (16.1)	891 (14.3)	0.05
York	2170 (9.2)	464 (7.4)	0.06
Household income quintile, ^{d,e} <i>n</i> (%)			
1 (lowest)	2787 (11.8)	954 (15.3)	0.10
2	3320 (14.1)	1011 (16.2)	0.06
3	4311 (18.3)	1210 (19.4)	0.03
4	5742 (24.3)	1348 (21.6)	0.06
5 (highest)	7390 (31.3)	1692 (27.1)	0.09
Essential workers quintile, ^{d,f} <i>n</i> (%)			
1 (0% to 32.5%)	5912 (25.0)	1186 (19.0)	0.15
2 (32.5% to 42.3%)	6400 (27.1)	1530 (24.5)	0.06
3 (42.3% to 49.8%)	4610 (19.5)	1315 (21.1)	0.04
4 (50.0% to 57.5%)	3673 (15.6)	1177 (18.9)	0.09
5 (57.5% to 100%)	2874 (12.2)	966 (15.5)	0.10
Persons per dwelling quintile, ^{d,g} <i>n</i> (%)			
1 (0–2.1)	2136 (9.0)	624 (10.0)	0.03
2 (2.2–2.4)	3104 (13.1)	1000 (16.0)	0.08
3 (2.5–2.6)	3084 (13.1)	815 (13.1)	0.00
4 (2.7–3.0)	6585 (27.9)	1610 (25.8)	0.05
5 (3.1–5.7)	8559 (36.2)	2125 (34.1)	0.05
Self-identified visible minority quintile, ^{d,h} <i>n</i> (%)			
1 (0.0% to 2.2%)	3165 (13.4)	1084 (17.4)	0.11
2 (2.2% to 7.5%)	3894 (16.5)	1103 (17.7)	0.03
3 (7.5% to 18.7%)	4821 (20.4)	1124 (18.0)	0.06
4 (18.7% to 43.5%)	5425 (23.0)	1249 (20.0)	0.07
5 (43.5% to 100%)	6165 (26.1)	1614 (25.9)	0.01
Positive test result >90 d before, <i>n</i> (%)	450 (1.9)	111 (1.8)	0.01
Week of test, <i>n</i> (%)			
November 22, 2021 to November 28, 2021	2906 (12.3)	0 (0.0)	0.53
November 29, 2021 to December 5, 2021	3437 (14.6)	0 (0.0)	0.58
December 6, 2021 to December 12, 2021	3717 (15.7)	0 (0.0)	0.61
December 13, 2021 to December 19, 2021	4180 (17.7)	0 (0.0)	0.66
December 20, 2021 to December 26, 2021	4595 (19.5)	0 (0.0)	0.70
December 27, 2021 to January 2, 2022	4780 (20.2)	306 (4.9)	0.48
January 3, 2022 to January 9, 2022	0 (0.0)	1433 (23.0)	0.77
January 10, 2022 to January 16, 2022	0 (0.0)	793 (12.7)	0.54
January 17, 2022 to January 23, 2022	0 (0.0)	601 (9.6)	0.46
January 24, 2022 to January 30, 2022	0 (0.0)	573 (9.2)	0.45
January 31, 2022 to February 6, 2022	0 (0.0)	471 (7.5)	0.40
February 7, 2022 to February 13, 2022	0 (0.0)	498 (8.0)	0.42
February 14, 2022 to February 20, 2022	0 (0.0)	532 (8.5)	0.43
February 21, 2022 to February 27, 2022	0 (0.0)	533 (8.5)	0.43
February 28, 2022 to March 6, 2022	0 (0.0)	500 (8.0)	0.42

SUPPLEMENTAL TABLE 5 Continued

	Tested on or Before December 31, 2021 ^a	Tested After December 31, 2021 ^a	SD ^b
Unvaccinated, <i>n</i> (%)	1675 (7.1)	526 (8.4)	0.05
Time since second dose, <i>d</i> , <i>n</i> (%)			
7–59	1004 (4.3)	150 (2.4)	0.10
60–119	4126 (17.5)	531 (8.5)	0.27
120–179	15 499 (65.6)	1861 (29.8)	0.77
≥180	1227 (5.2)	2876 (46.1)	1.06
Time since third dose, <i>d</i> , <i>n</i> (%)			
0–6	32 (0.1)	96 (1.5)	0.15
≥7	52 (0.2)	200 (3.2)	0.23
Interval between first dose and second dose, <i>n</i> (%)			
Unvaccinated	1675 (7.1)	526 (8.4)	0.05
<35 d, <5 wk	8249 (34.9)	2085 (33.4)	0.03
35–55 d, 5–7 wk	10 371 (43.9)	2662 (42.7)	0.03
≥56 d, ≥8 wk	3320 (14.1)	967 (15.5)	0.04

^aProportion reported, unless stated otherwise.

^bStandardized differences of >0.10 are considered clinically relevant. Comparison of subjects tested after December 31, 2021 and before December 31, 2021. SD, standardized difference.

^cComorbidities include asthma, diabetes, immunocompromising conditions due to underlying diseases or therapy, autoimmune diseases, active cancer, or pediatric complex chronic conditions.

^dThe sum of counts does not equal the column total because of individuals with missing information (≤1.1%) for this characteristic.

^eHousehold income quintile has variable cutoff values in each city/census area to account for cost of living. A dissemination area being in quintile 1 means it is among the lowest 20% of dissemination area in its city by income.

^fPercentage of people in the area working in the following occupations: sales and service occupations, trades, transport, and equipment operators and related occupations, natural resources, agriculture, and related production occupations, and occupations in manufacturing and utilities. Census counts for people are randomly rounded up or down to the nearest number divisible by 5, which causes some minor imprecision.

^gRange of persons per dwelling.

^hPercentage of people in the area who self-identified as a visible minority (ie, “persons, other than aboriginal peoples, who are non-Caucasian in race or non-white in colour”). Census counts for people are randomly rounded up or down to the nearest number divisible by 5, which causes some minor imprecision.