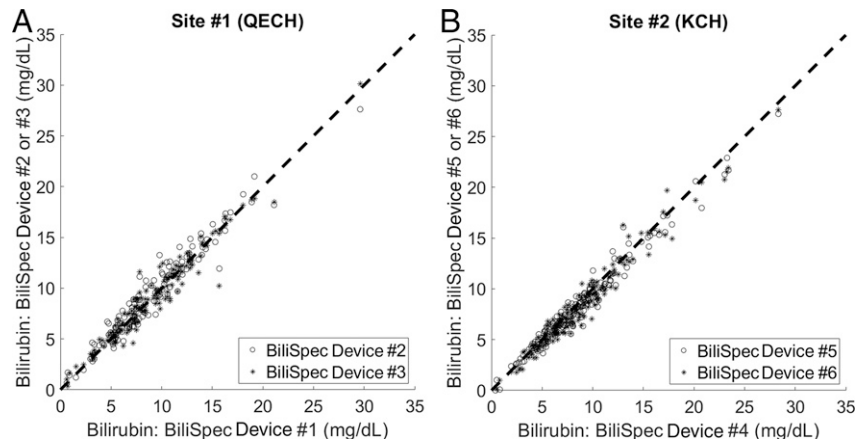
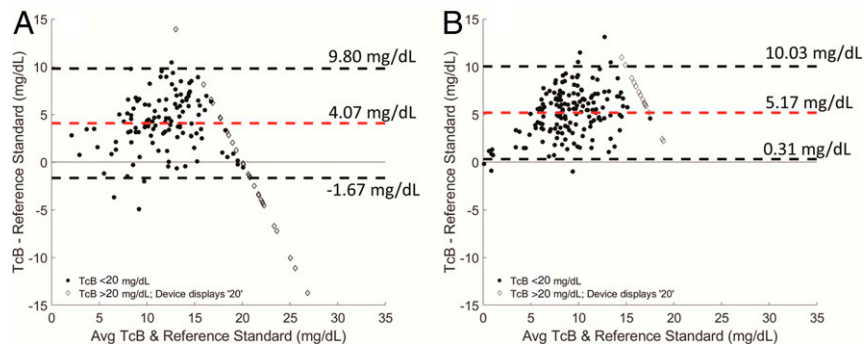


Supplemental Information



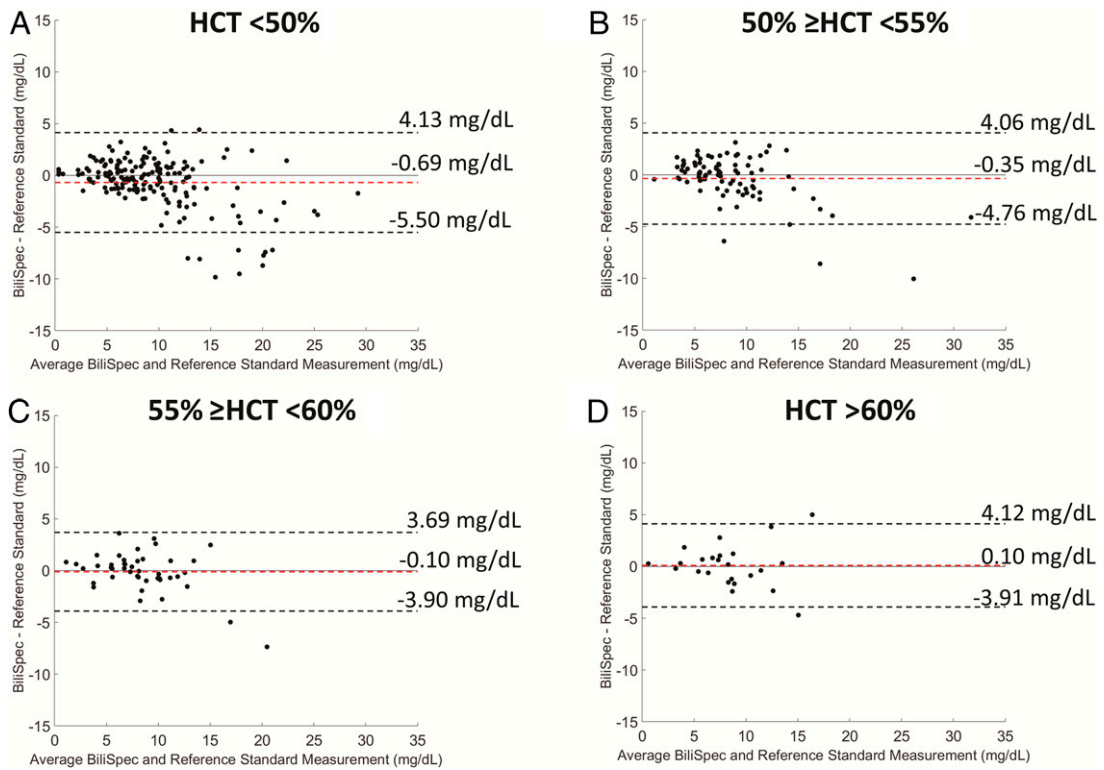
SUPPLEMENTAL FIGURE 5

Agreement between BiliSpec devices for samples measured with multiple readers. (A) Site 1 (QECH); TSB measured with readers 2 and 3 plotted versus reader 1. (B) Results at site 2 (KCH); TSB measured with readers 5 and 6 plotted versus reader 4. Dashed lines indicate lines of perfect agreement.



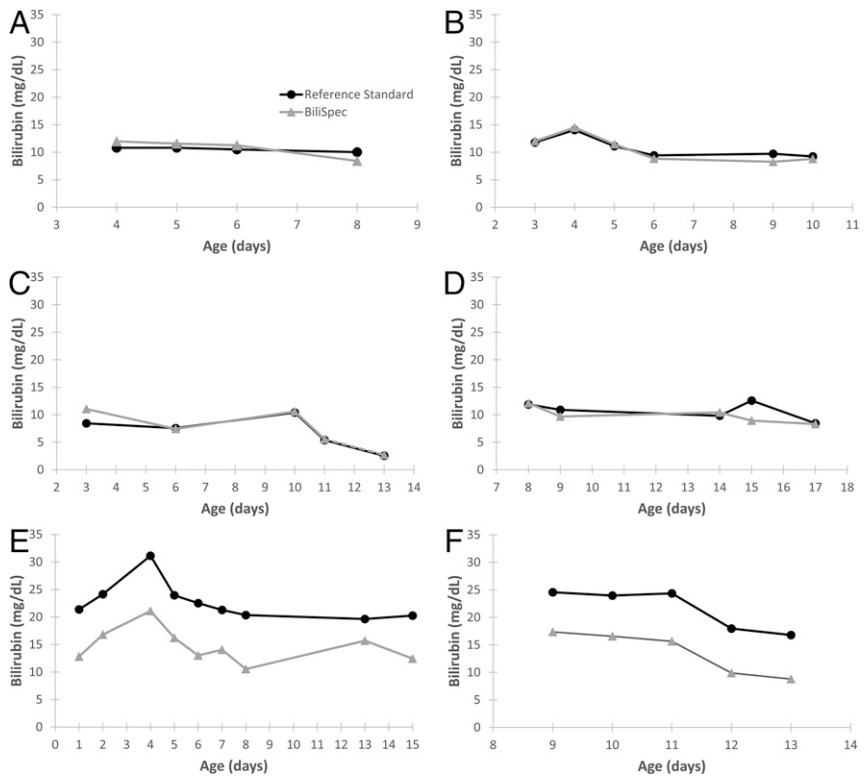
SUPPLEMENTAL FIGURE 6

Bland-Altman plot for validation data, TcB versus reference standard, divided by measurements taken while the neonate was (A) on phototherapy treatment (149 measurements), and (B) not on phototherapy treatment (177 measurements). Dashed red lines indicate bias; dashed black lines indicate 95% limits of agreement.



SUPPLEMENTAL FIGURE 7

Bland-Altman graphs comparing BiliSpec TSB to reference standard, stratified by hematocrit (HCT). Dashed red lines indicate bias; dashed black lines indicate 95% limits of agreement. (A) Samples with HCT <50%, (B) HCT between 50% and 55%, (C) HCT between 55% and 60%, (D) HCT >60%.



SUPPLEMENTAL FIGURE 8

Time series of bilirubin values measured with BiliSpec and the reference standard for all six neonates in the study with 4 or more sample measurements.