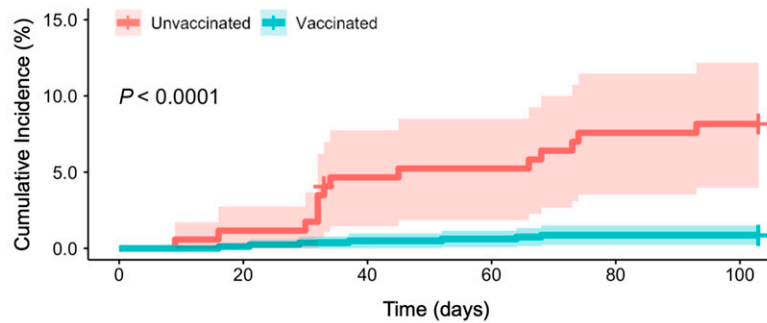


## Supplemental Materials



No. at risk (no. of events)	
Unvaccinated	172 (0)    170 (2)    163 (8)    162 (9)    158 (13)    157 (14)
Vaccinated	810 (0)    809 (1)    806 (4)    805 (5)    803 (7)    803 (7)

### SUPPLEMENTAL FIGURE 2

Sensitivity analysis of documented SARS-CoV-2 infection accounting for vaccine eligibility. Sensitivity analysis of cumulative incidence of documented SARS-CoV-2 infection among seventh to twelfth grade students, by vaccination status. Day 0 was August 1, 2021. Shaded areas indicate 95% confidence intervals. SARS-CoV-2, severe acute respiratory syndrome coronavirus 2.

**SUPPLEMENTAL TABLE 2** Characteristics of the Sixth to Twelfth Grade Study Population

Characteristic	Middle School Students <sup>a</sup> ( <i>n</i> = 465)	High School Students <sup>a</sup> ( <i>n</i> = 663)	All Students ( <i>n</i> = 1128)
Race or ethnicity, <sup>b</sup> <i>n</i> (%)			
Asian	61 (13.1)	56 (8.4)	117 (10.4)
Black	44 (9.5)	52 (7.8)	96 (8.5)
Did not report	38 (8.2)	57 (8.6)	100 (8.9)
Hispanic	19 (4.1)	21 (3.2)	40 (3.5)
International students	0 (–)	5 (0.8)	5 (0.4)
Middle Eastern	7 (1.5)	<5 (0.6)	11 (1.0)
Multiracial	31 (6.7)	41 (6.2)	72 (6.4)
Native American	<5 (0.6)	5 (0.8)	8 (0.7)
Pacific Islander	<5 (0.4)	0 (–)	<5 (0.2)
White	258 (55.5)	419 (63.2)	677 (60.0)
Sex, <i>n</i> (%)			
Male	226 (48.6)	333 (50.2)	559 (49.6)
Female	239 (51.4)	329 (49.6)	568 (50.4)
Vaccination status, <i>n</i> (%)			
Vaccinated	264 (56.7)	565 (85.2)	829 (73.5)
Unvaccinated	201 (43.2)	98 (14.8)	299 (26.5)
COVID-19 infections, <i>n</i>			
Primary <sup>c</sup>	12	13	25
Secondary <sup>c</sup>	1	1	2
School-related quarantines, <i>n</i>	1	9	10
COVID-19 tests reported, <sup>d</sup> <i>n</i>	68	144	212

COVID-19, coronavirus disease 2019; SARS-CoV-2, severe acute respiratory syndrome coronavirus 2.

<sup>a</sup> Middle school includes students in grades six to eight; high school is grades nine to 12.

<sup>b</sup> International students are exchange students who are not United States citizens.

<sup>c</sup> Primary infections are infections resulting from community exposure; secondary infections are infections resulting from within-school transmission.

<sup>d</sup> Includes all SARS-CoV-2 tests reported to the school nurses, including both tests done at the school or in the community, and tests done following exposure, due to symptoms, or before travel.

**SUPPLEMENTAL TABLE 3** Characteristics of the Seventh through Twelfth Grade Sensitivity Analysis Population

Characteristic	Seventh-Eighth Grade Students <sup>a</sup> ( <i>n</i> = 319)	High School Students <sup>a</sup> ( <i>n</i> = 663)	Seventh to Twelfth Grade Students ( <i>n</i> = 982)
Vaccination status, <i>n</i> (%)			
Vaccinated	245 (76.8)	565 (85.2)	810 (82.5)
Unvaccinated	74 (23.2)	98 (14.8)	172 (17.5)
COVID-19 infections, <sup>b</sup> <i>n</i>			
Primary	6	13	19
Secondary	1	1	2
School-related quarantines, <i>n</i>	1	9	10

COVID-19, coronavirus disease 2019.

<sup>a</sup> High school includes grades 9 to 12.

<sup>b</sup> Primary infections are infections resulting from community exposure; secondary infections are infections resulting from within-school transmission.

**SUPPLEMENTAL TABLE 4** Sensitivity Analysis of SARS-CoV-2 Incidence and Vaccine Effectiveness Among Seventh through Twelfth Grade Students

	Number of Events	Total Person-Days at Risk	Incidence Rate per 1000 Person-Days	Incidence Rate Ratio (95% CI)	Vaccine Effectiveness,% (95% CI)
Documented SARS-CoV-2 infections <sup>a</sup>					
Unvaccinated	14	16 841	0.831	9.9 (4.0–24.2)	89.9 (74.9–95.1)
Vaccinated	7	82 996	0.084	Reference	
Symptomatic SARS-CoV-2 infections <sup>b</sup>					
Unvaccinated	11	16 841	0.653	10.8 (3.8–31.2)	90.8 (73.5–96.8)
Vaccinated	5	82 996	0.060	Reference	

CI, confidence interval; SARS-CoV-2, severe acute respiratory syndrome coronavirus 2.

<sup>a</sup> Documented SARS-CoV-2 infection includes both symptomatic and asymptomatic infections.

<sup>b</sup> Students with asymptomatic SARS-CoV-2 infection were censored at time of infection.