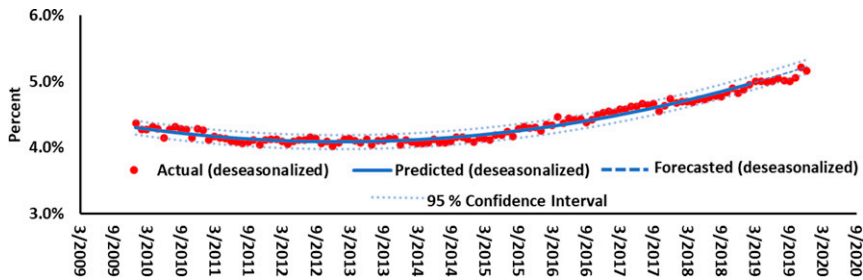
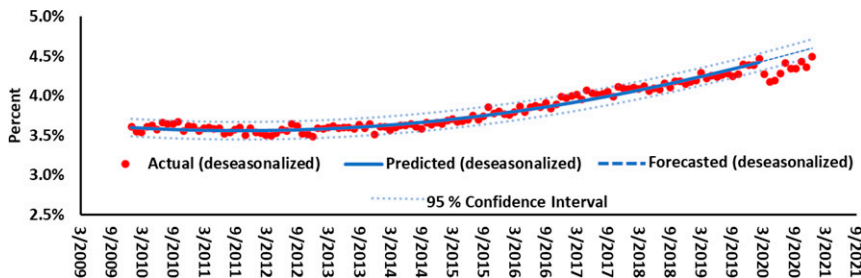


## Supplemental Information



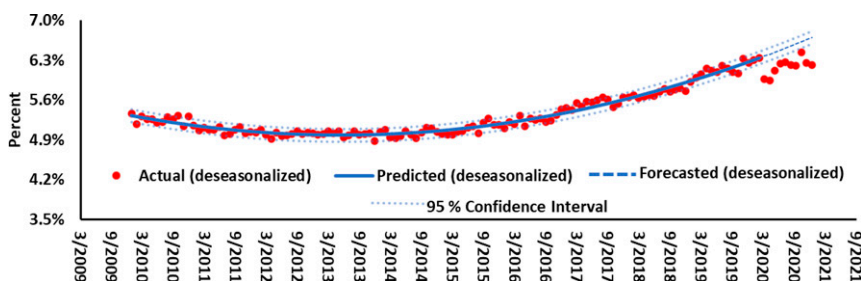
### SUPPLEMENTAL FIGURE 3

Monthly incidence of preterm birth by cesarean or induced delivery, 2010 to 2019. Using data from January 2010 to February 2019 and forecasted March 2019 and after. Authors' calculations based on national natality files, NCHS ([https://www.cdc.gov/nchs/data\\_access/vitalstatsonline.htm](https://www.cdc.gov/nchs/data_access/vitalstatsonline.htm)).



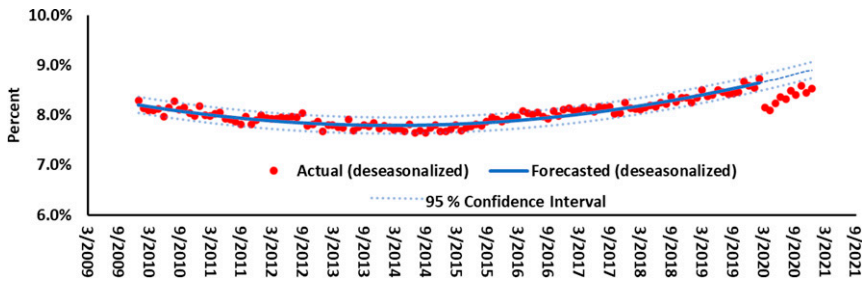
### SUPPLEMENTAL FIGURE 4

Monthly incidence of low birth weight by cesarean or induced delivery, 2010 to 2020. Authors' calculations based on national natality files, NCHS ([https://www.cdc.gov/nchs/data\\_access/vitalstatsonline.htm](https://www.cdc.gov/nchs/data_access/vitalstatsonline.htm)).



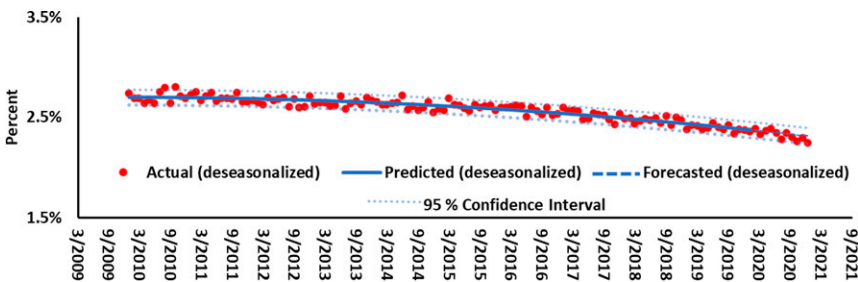
### SUPPLEMENTAL FIGURE 5

Monthly incidence of preterm birth by cesarean or induced delivery, 2010 to 2020. Using last normal menses and birth date instead of obstetrician's estimate. Authors' calculations based on national natality files, NCHS ([https://www.cdc.gov/nchs/data\\_access/vitalstatsonline.htm](https://www.cdc.gov/nchs/data_access/vitalstatsonline.htm)).



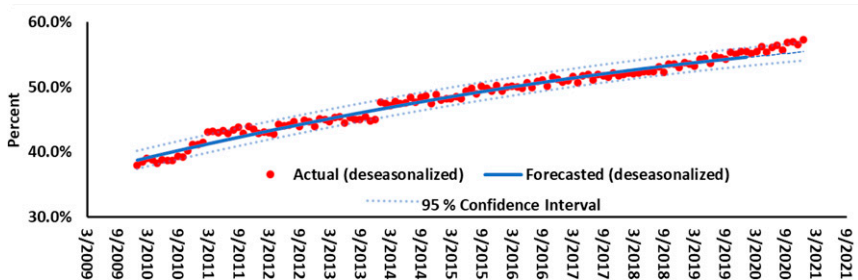
**SUPPLEMENTAL FIGURE 6**

Monthly incidence of preterm birth, 2010 to 2020. Authors' calculations based on national natality files, NCHS ([https://www.cdc.gov/nchs/data\\_access/vitalstatsonline.htm](https://www.cdc.gov/nchs/data_access/vitalstatsonline.htm)).



**SUPPLEMENTAL FIGURE 7**

Monthly incidence of low birth weight absent cesarean or induced delivery, 2010 to 2020. Authors' calculations based on national natality files, NCHS ([https://www.cdc.gov/nchs/data\\_access/vitalstatsonline.htm](https://www.cdc.gov/nchs/data_access/vitalstatsonline.htm)).



**SUPPLEMENTAL FIGURE 8**

Monthly incidence of cesarean or induced delivery, 2010 to 2020. Authors' calculations based on national natality files, NCHS ([https://www.cdc.gov/nchs/data\\_access/vitalstatsonline.htm](https://www.cdc.gov/nchs/data_access/vitalstatsonline.htm)).