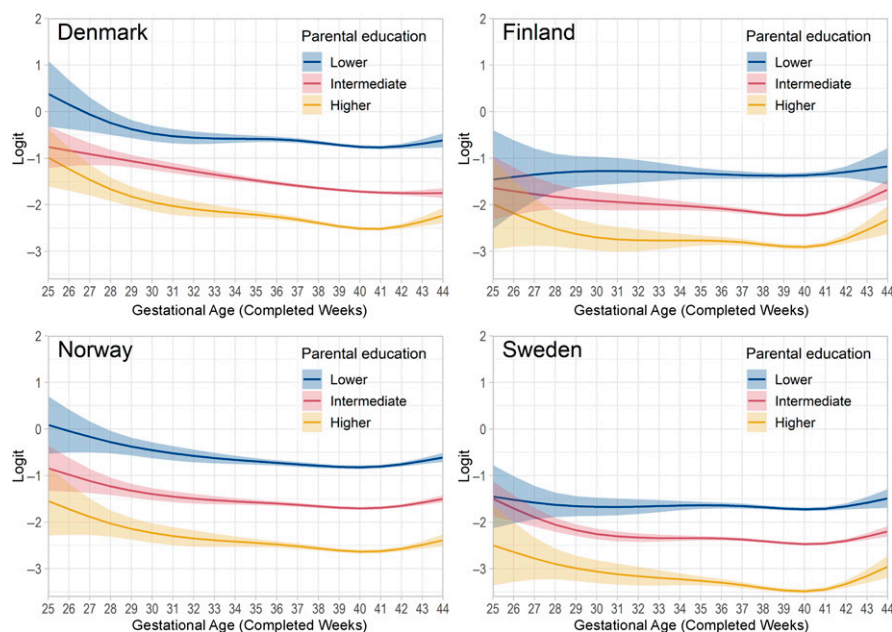
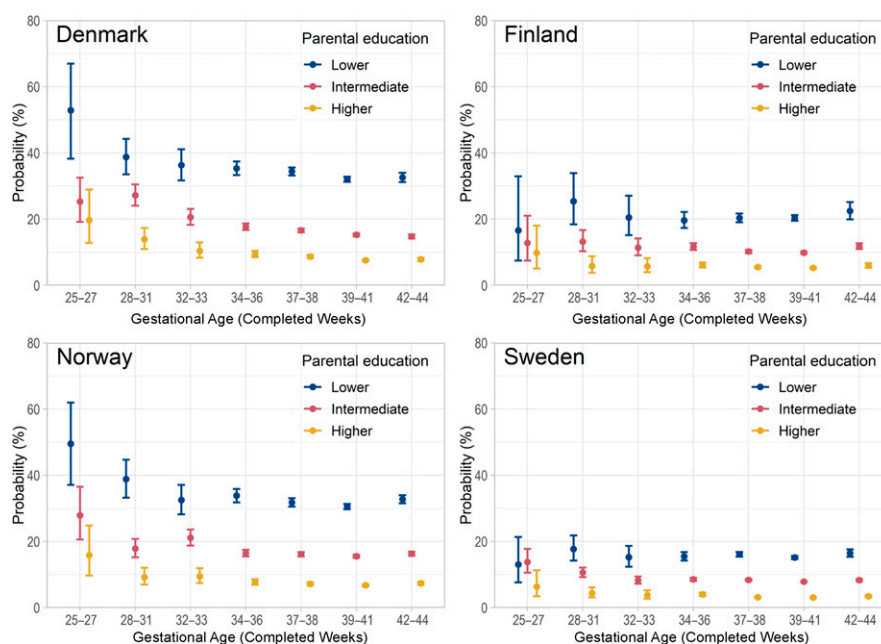


Supplemental Information



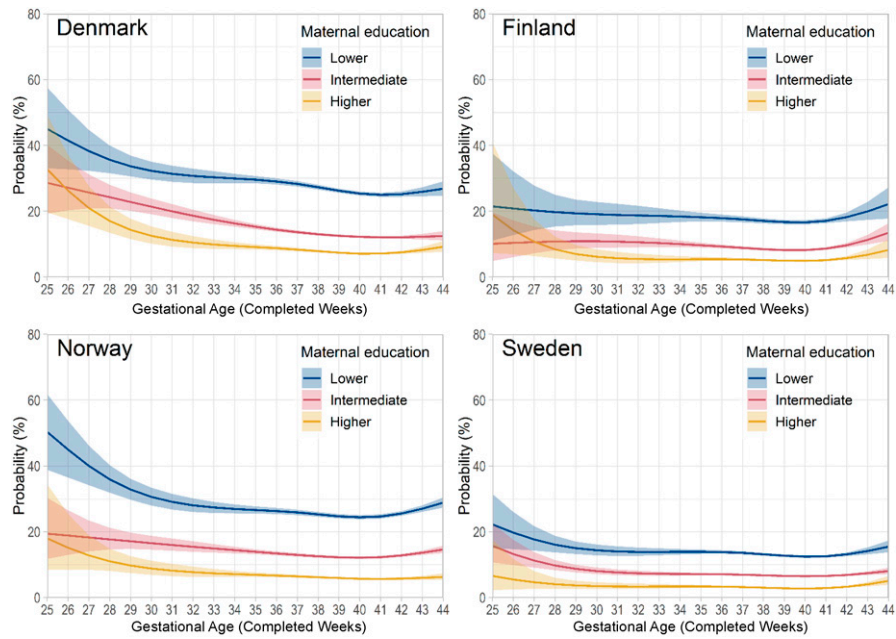
SUPPLEMENTAL FIGURE 4

Logit and 95% CIs of low educational attainment at 25 years according to gestational age and parental educational level in Denmark, Finland, Norway, and Sweden. Estimates were adjusted for birth year, sex, congenital anomalies, parity, maternal age, and maternal country of birth and were obtained from models that included an interaction term between gestational age and parental educational level (Denmark: $P = .01$; Finland: $P = .51$; Norway: $P = .94$; Sweden: $P = .09$). Areas represent 95% CIs.



SUPPLEMENTAL FIGURE 5

Probability of low educational attainment at 25 years according to gestational age category and parental educational level in Denmark, Finland, Norway, and Sweden. Estimates were adjusted for birth year, sex, congenital anomalies, parity, maternal age, and maternal country of birth and were obtained from models that included an interaction term between gestational age (categorical) and parental educational level (Denmark: $P = .03$; Finland: $P = .47$; Norway: $P = .43$; Sweden: $P = .03$). Areas represent 95% CIs.



SUPPLEMENTAL FIGURE 6

Probability and 95% CIs of low educational attainment at 25 years according to gestational age and maternal educational level in Denmark, Finland, Norway, and Sweden. Estimates were adjusted for birth year, sex, congenital anomalies, parity, maternal age, and maternal country of birth and were obtained from models that included an interaction term between gestational age and parental educational level (Denmark: $P = .01$; Finland: $P = .57$; Norway: $P = .47$; Sweden: $P = .33$). Areas represent 95% CIs.

SUPPLEMENTAL TABLE 3 Study Population Characteristics According to Gestational Age for Denmark

Denmark	Gestational Age (Completed wk)						
	25–27 (N = 274), n (%)	28–31 (N = 1373), n (%)	32–33 (N = 1843), n (%)	34–36 (N = 10 612), n (%)	37–38 (N = 44 343), n (%)	39–41 (N = 241 269), n (%)	42–44 (N = 31 734), n (%)
Birth year							
1987	28 (10.2)	195 (14.2)	261 (14.2)	1551 (14.6)	6133 (13.8)	36 639 (15.2)	5133 (16.2)
1988	42 (15.3)	221 (16.1)	307 (16.7)	1772 (16.7)	7107 (16.0)	38 484 (16.0)	4746 (15.0)
1989	48 (17.5)	204 (14.9)	315 (17.1)	1690 (15.9)	7090 (16.0)	39 933 (16.6)	5824 (18.4)
1990	47 (17.2)	225 (16.4)	310 (16.8)	1737 (16.4)	7343 (16.6)	41 325 (17.1)	5998 (18.9)
1991	44 (16.1)	247 (18.0)	312 (16.9)	1845 (17.4)	7650 (17.3)	41 435 (17.2)	5202 (16.4)
1992	65 (23.7)	281 (20.5)	338 (18.3)	2017 (19.0)	9020 (20.3)	43 453 (18.0)	4831 (15.2)
Sex							
Female	140 (51.1)	597 (43.5)	785 (42.6)	4685 (44.1)	20 554 (46.4)	119 272 (49.4)	15 281 (48.2)
Male	134 (48.9)	776 (56.5)	1058 (57.4)	5927 (55.9)	23 789 (53.6)	121 997 (50.6)	16 453 (51.8)
Congenital anomaly							
No	260 (94.9)	1315 (95.8)	1772 (96.1)	10 282 (96.9)	43 366 (97.8)	237 735 (98.5)	31 237 (98.4)
Yes	14 (5.1)	58 (4.2)	71 (3.9)	330 (3.1)	977 (2.2)	3534 (1.5)	497 (1.6)
Maternal age, y							
≤24	57 (20.8)	359 (26.1)	500 (27.1)	2990 (28.2)	11 576 (26.1)	58 626 (24.3)	7842 (24.7)
25–29	104 (38.0)	498 (36.3)	681 (37.0)	4197 (39.5)	17 660 (39.8)	101 500 (42.1)	13 628 (42.9)
30–34	67 (24.5)	367 (26.7)	451 (24.5)	2313 (21.8)	10 570 (23.8)	60 094 (24.9)	7836 (24.7)
≥35	46 (16.8)	149 (10.9)	211 (11.4)	1112 (10.5)	4537 (10.2)	21 049 (8.7)	2428 (7.7)
Maternal education							
Lower	104 (38.0)	571 (41.6)	746 (40.5)	4164 (39.2)	16 385 (37.0)	77 509 (32.1)	9952 (31.4)
Intermediate	105 (38.3)	519 (37.8)	710 (38.5)	4242 (40.0)	17 721 (40.0)	97 861 (40.6)	13 075 (41.2)
Higher	65 (23.7)	283 (20.6)	387 (21.0)	2206 (20.8)	10 237 (23.1)	65 899 (27.3)	8707 (27.4)
Parental education							
Lower	47 (17.2)	311 (22.7)	377 (20.5)	2169 (20.4)	8252 (18.6)	36 731 (15.2)	4754 (15.0)
Intermediate	146 (53.3)	669 (48.7)	919 (49.9)	5422 (51.1)	22 202 (50.1)	118 307 (49.0)	15 623 (49.2)
Higher	81 (29.6)	393 (28.6)	547 (29.7)	3021 (28.5)	13 889 (31.3)	86 231 (35.7)	11 357 (35.8)
Maternal parity							
Multiparous	124 (45.3)	642 (46.8)	835 (45.3)	4998 (47.1)	23 578 (53.2)	129 752 (53.8)	15 354 (48.4)
Primiparous	150 (54.7)	731 (53.2)	1008 (54.7)	5614 (52.9)	20 765 (46.8)	111 517 (46.2)	16 380 (51.6)
Maternal country of birth							
Same as delivery	255 (93.1)	1291 (94.0)	1770 (96.0)	10 066 (94.9)	41 610 (93.8)	230 172 (95.4)	30 572 (96.3)
Europe	7 (2.6)	41 (3.0)	22 (1.2)	172 (1.6)	779 (1.8)	3873 (1.6)	434 (1.4)
Outside Europe	12 (4.4)	41 (3.0)	51 (2.8)	374 (3.5)	1954 (4.4)	7224 (3.0)	728 (2.3)

SUPPLEMENTAL TABLE 4 Study Population Characteristics According to Gestational Age for Finland

Finland	Gestational Age (Completed wk)						
	25–27 (N = 179), n (%)	28–31 (N = 713), n (%)	32–33 (N = 981), n (%)	34–36 (N = 7136), n (%)	37–38 (N = 37 702), n (%)	39–41 (N = 164 000), n (%)	42–44 (N = 9384), n (%)
Birth year							
1987	48 (26.8)	187 (26.2)	260 (26.5)	1842 (25.8)	9294 (24.7)	41 883 (25.5)	2262 (24.1)
1988	51 (28.5)	182 (25.5)	263 (26.8)	1882 (26.4)	10 538 (28.0)	43 686 (26.6)	2258 (24.1)
1989	43 (24.0)	194 (27.2)	242 (24.7)	1930 (27.0)	10 128 (26.9)	43 797 (26.7)	2675 (28.5)
1990 ^a	37 (20.7)	150 (21.0)	216 (22.0)	1482 (20.8)	7742 (20.5)	34 634 (21.1)	2189 (23.3)
1991	—	—	—	—	—	—	—
1992	—	—	—	—	—	—	—
Sex							
Female	78 (43.6)	306 (42.9)	432 (44.0)	3204 (44.9)	17 737 (47.0)	80 910 (49.3)	4522 (48.2)
Male	101 (56.4)	407 (57.1)	549 (56.0)	3932 (55.1)	19 965 (53.0)	83 090 (50.7)	4862 (51.8)
Congenital anomaly							
No	172 (96.1)	679 (95.2)	950 (96.8)	6981 (97.8)	37 154 (98.5)	162 470 (99.1)	9294 (99.0)
Yes	7 (3.9)	34 (4.8)	31 (3.2)	155 (2.2)	548 (1.5)	1530 (0.9)	90 (1.0)
Maternal age, y							
≤24	31 (17.3)	161 (22.6)	234 (23.9)	1792 (25.1)	8174 (21.7)	37 450 (22.8)	2425 (25.8)
25–29	56 (31.3)	218 (30.6)	296 (30.2)	2311 (32.4)	13 333 (35.4)	62 518 (38.1)	3653 (38.9)
30–34	53 (29.6)	190 (26.6)	246 (25.1)	1795 (25.2)	10 134 (26.9)	43 382 (26.5)	2396 (25.5)
≥35	39 (21.8)	144 (20.2)	205 (20.9)	1238 (17.3)	6061 (16.1)	20 650 (12.6)	910 (9.7)
Maternal education^a							
Lower	53 (29.6)	193 (27.1)	295 (30.1)	1792 (25.1)	8600 (22.8)	33 380 (20.4)	2003 (21.3)
Intermediate	78 (43.6)	318 (44.6)	424 (43.2)	3318 (46.5)	17 267 (45.8)	78 447 (47.8)	4583 (48.8)
Higher	48 (26.8)	202 (28.3)	262 (26.7)	2026 (28.4)	11 835 (31.4)	52 173 (31.8)	2798 (29.8)
Parental education^a							
Lower	28 (15.6)	100 (14.0)	148 (15.1)	869 (12.2)	3946 (10.5)	14 461 (8.8)	855 (9.1)
Intermediate	79 (44.1)	349 (48.9)	464 (47.3)	3473 (48.7)	17 762 (47.1)	78 915 (48.1)	4670 (49.8)
Higher	72 (40.2)	264 (37.0)	369 (37.6)	2794 (39.2)	15 994 (42.4)	70 624 (43.1)	3859 (41.1)
Maternal parity^a							
Multiparous	105 (58.7)	371 (52.0)	515 (52.5)	3810 (53.4)	23 232 (61.6)	99 742 (60.8)	4375 (46.6)
Primiparous	74 (41.3)	342 (48.0)	466 (47.5)	3326 (46.6)	14 470 (38.4)	64 258 (39.2)	5009 (53.4)
Maternal country of birth^b							
Same as delivery	179 (100)	713 (100)	981 (100)	7136 (100)	37 702 (100)	164 000 (100)	9384 (100)
Outside Europe	—	—	—	—	—	—	—
Europe	—	—	—	—	—	—	—

—, not applicable because Finnish study population was born from January 1987 to September 1991.

^a Parental highest educational level at birth according to ISCED was categorized as lower (ISCED 0–2), intermediate (ISCED 3–4), and higher (ISCED 5–8). In the Finnish study population, those who had completed lower secondary education and those with missing educational information could not be separated and were included in the same group.

^b Few mothers were born outside Finland; thus they are not shown by country of birth.

SUPPLEMENTAL TABLE 5 Study Population Characteristics According to Gestational Age for Norway

Norway	Gestational Age (Completed wk)						
	25–27 (N = 250), n (%)	28–31 (N = 1264), n (%)	32–33 (N = 1837), n (%)	34–36 (N = 10 800), n (%)	37–38 (N = 38 364), n (%)	39–41 (N = 199 464), n (%)	42–44 (N = 40 861), n (%)
Birth year							
1987	34 (13.6)	201 (15.9)	293 (15.9)	1599 (14.8)	5574 (14.5)	30 769 (15.4)	6295 (15.4)
1988	41 (16.4)	179 (14.2)	275 (15.0)	1732 (16.0)	6086 (15.9)	32 655 (16.4)	6603 (16.2)
1989	37 (14.8)	197 (15.6)	308 (16.8)	1803 (16.7)	6305 (16.4)	33 772 (16.9)	6829 (16.7)
1990	47 (18.8)	220 (17.4)	339 (18.5)	1917 (17.8)	6894 (18.0)	34 516 (17.3)	7092 (17.4)
1991	38 (15.2)	251 (19.9)	321 (17.5)	1980 (18.3)	6827 (17.8)	34 234 (17.2)	6946 (17.0)
1992	53 (21.2)	216 (17.1)	301 (16.4)	1769 (16.4)	6678 (17.4)	33 518 (16.8)	7096 (17.4)
Sex							
Female	123 (49.2)	598 (47.3)	832 (45.3)	4798 (44.4)	16 869 (44.0)	98 039 (49.2)	20 805 (50.9)
Male	127 (50.8)	666 (52.7)	1005 (54.7)	6002 (55.6)	21 495 (56.0)	101 425 (50.8)	20 056 (49.1)
Congenital anomaly							
No	245 (98.0)	1228 (97.2)	1785 (97.2)	10 421 (96.5)	37 069 (96.6)	193 716 (97.1)	39 603 (96.9)
Yes	5 (2.0)	36 (2.8)	52 (2.8)	379 (3.5)	1295 (3.4)	5748 (2.9)	1258 (3.1)
Maternal age, y							
≤24	64 (25.6)	366 (29.0)	546 (29.7)	3252 (30.1)	9796 (25.5)	49 756 (24.9)	12 209 (29.9)
25–29	73 (29.2)	404 (32.0)	627 (34.1)	3690 (34.2)	13 528 (35.3)	75 673 (37.9)	15 605 (38.2)
30–34	72 (28.8)	288 (22.8)	430 (23.4)	2537 (23.5)	10 044 (26.2)	53 383 (26.8)	9781 (23.9)
≥35	41 (16.4)	206 (16.3)	234 (12.7)	1321 (12.2)	4996 (13.0)	20 652 (10.4)	3266 (8.0)
Maternal education							
Lower	104 (41.6)	510 (40.3)	752 (40.9)	4229 (39.2)	13 422 (35.0)	66 186 (33.2)	14 911 (36.5)
Intermediate	92 (36.8)	482 (38.1)	731 (39.8)	4293 (39.8)	15 733 (41.0)	82 926 (41.6)	17 064 (41.8)
Higher	54 (21.6)	272 (21.5)	354 (19.3)	2278 (21.1)	9209 (24.0)	50 352 (25.2)	888 (2.2)
Parental education							
Lower	63 (25.2)	269 (21.3)	393 (21.4)	2164 (20.0)	6507 (17.0)	30 988 (15.5)	7289 (17.8)
Intermediate	111 (44.4)	588 (46.5)	912 (49.6)	5250 (48.6)	18 198 (47.4)	94 900 (47.6)	20 073 (49.1)
Higher	76 (30.4)	407 (32.2)	532 (29.0)	3386 (31.4)	13 659 (35.6)	73 576 (36.9)	13 499 (33.0)
Maternal parity							
Multiparous	129 (51.6)	606 (47.9)	838 (45.6)	5185 (48.0)	21 495 (56.0)	115 429 (57.9)	21 373 (52.3)
Primiparous	121 (48.4)	658 (52.1)	999 (54.4)	5615 (52.0)	16 869 (44.0)	84 035 (42.1)	19 488 (47.7)
Maternal country of birth							
Same as delivery	227 (90.8)	1174 (92.9)	1707 (92.9)	10 032 (92.9)	35 439 (92.4)	188 197 (94.4)	38 897 (95.2)
Europe	11 (4.4)	33 (2.6)	45 (2.4)	252 (2.3)	1029 (2.7)	4921 (2.5)	903 (2.2)
Outside Europe	12 (4.8)	57 (4.5)	85 (4.6)	516 (4.8)	1896 (4.9)	6346 (3.2)	1061 (2.6)

SUPPLEMENTAL TABLE 6 Study Population Characteristics According to Gestational Age for Sweden

Sweden	Gestational Age (Completed wk)						
	25–27 (N = 444), n (%)	28–31 (N = 2109), n (%)	32–33 (N = 2947), n (%)	34–36 (N = 19 824), n (%)	37–38 (N = 94 909), n (%)	39–41 (N = 357 424), n (%)	42–44 (N = 36 318), n (%)
Birth year							
1987	70 (15.8)	391 (18.5)	564 (19.1)	3662 (18.5)	17 437 (18.4)	63 661 (17.8)	6698 (18.4)
1988	88 (19.8)	437 (20.7)	586 (19.9)	4071 (20.5)	19 257 (20.3)	68 585 (19.2)	6379 (17.6)
1989	82 (18.5)	374 (17.7)	587 (19.9)	4077 (20.6)	18 937 (20.0)	71 721 (20.1)	7295 (20.1)
1990	102 (23.0)	450 (21.3)	566 (19.2)	4058 (20.5)	19 851 (20.9)	76 500 (21.4)	7896 (21.7)
1991	102 (23.0)	457 (21.7)	644 (21.9)	3956 (20.0)	19 427 (20.5)	76 957 (21.5)	8050 (22.2)
1992	na	na	na	na	na	na	na
Sex							
Female	230 (51.8)	954 (45.2)	1323 (44.9)	8896 (44.9)	46 385 (48.9)	175 452 (49.1)	16 362 (45.1)
Male	214 (48.2)	1155 (54.8)	1624 (55.1)	10 928 (55.1)	48 524 (51.1)	181 972 (50.9)	19 956 (54.9)
Congenital anomaly							
No	281 (63.3)	1745 (82.7)	2617 (88.8)	18 427 (93.0)	90 331 (95.2)	343 153 (96.0)	34 741 (95.7)
Yes	163 (36.7)	364 (17.3)	330 (11.2)	1397 (7.0)	4578 (4.8)	14 271 (4.0)	1577 (4.3)
Maternal age, y							
≤24	120 (27.0)	537 (25.5)	756 (25.7)	5099 (25.7)	21 078 (22.2)	79 861 (22.3)	7821 (21.5)
25–29	112 (25.2)	662 (31.4)	1015 (34.4)	6948 (35.0)	33 835 (35.6)	133 112 (37.2)	13 261 (36.5)
30–34	112 (25.2)	513 (24.3)	713 (24.2)	4846 (24.4)	25 515 (26.9)	98 125 (27.5)	10 292 (28.3)
≥35	100 (22.5)	397 (18.8)	463 (15.7)	2931 (14.8)	14 481 (15.3)	46 326 (13.0)	4944 (13.6)
Maternal education							
Lower	130 (29.3)	684 (32.4)	929 (31.5)	6066 (30.6)	27 948 (29.4)	95 434 (26.7)	9620 (26.5)
Intermediate	224 (50.5)	1030 (48.8)	1459 (49.5)	9753 (49.2)	46 432 (48.9)	178 856 (50.0)	17 985 (49.5)
Higher	90 (20.3)	395 (18.7)	559 (19.0)	4005 (20.2)	20 529 (21.6)	83 134 (23.3)	8713 (24.0)
Parental education							
Lower	59 (13.3)	295 (14.0)	369 (12.5)	2467 (12.4)	11 118 (11.7)	37 216 (10.4)	3698 (10.2)
Intermediate	260 (58.6)	1283 (60.8)	1843 (62.5)	12 132 (61.2)	57 001 (60.1)	212 505 (59.5)	21 288 (58.6)
Higher	125 (28.2)	531 (25.2)	735 (24.9)	5225 (26.4)	26 790 (28.2)	107 703 (30.1)	11 332 (31.2)
Maternal parity							
Multiparous	219 (49.3)	1006 (47.7)	1418 (48.1)	9735 (49.1)	56 811 (59.9)	21 0453 (58.9)	18 623 (51.3)
Primiparous	225 (50.7)	1103 (52.3)	1529 (51.9)	10 089 (50.9)	38 098 (40.1)	146 971 (41.1)	17 695 (48.7)
Maternal country of birth							
Same as delivery	54 (12.2)	174 (8.3)	199 (6.8)	1428 (7.2)	6922 (7.3)	24 474 (6.8)	2549 (7.0)
Europe	11 (2.5)	88 (4.2)	107 (3.6)	722 (3.6)	4175 (4.4)	11 957 (3.3)	1144 (3.1)
Outside Europe	379 (85.4)	1847 (87.6)	2641 (89.6)	17 674 (89.2)	83 812 (88.3)	320 993 (89.8)	32 625 (89.8)

na, not applicable because Swedish study population was born from 1987 to 1991.

SUPPLEMENTAL TABLE 7 Probability and 95% CIs of Low Educational Attainment at 25 Years According to Gestational Age and Parental Educational Level in Denmark

Gestational Wk	Parental Educational Level					
	Lower		Intermediate		Higher	
	%	95% CI	%	95% CI	%	95% CI
25	59.5	42.0 to 74.9	31.9	23.0 to 42.3	27.2	16.7 to 41
26	53.8	40.8 to 66.4	30.3	23.7 to 37.7	22.6	15.5 to 31.6
27	48.5	39.4 to 57.7	28.7	24.1 to 33.7	18.8	14.2 to 24.4
28	44.0	37.9 to 50.4	27.2	24.0 to 30.6	15.9	12.8 to 19.5
29	40.7	36.2 to 45.5	25.7	23.2 to 28.3	13.9	11.5 to 16.7
30	38.5	34.6 to 42.6	24.3	22.2 to 26.6	12.5	10.5 to 14.9
31	37.1	33.6 to 40.8	23.0	21.1 to 25.0	11.6	9.9 to 13.6
32	36.4	33.3 to 39.6	21.7	20.1 to 23.5	11.0	9.5 to 12.7
33	36.0	33.4 to 38.7	20.6	19.3 to 22.0	10.5	9.4 to 11.9
34	35.9	33.9 to 38.0	19.5	18.5 to 20.6	10.2	9.3 to 11.2
35	35.8	34.2 to 37.4	18.6	17.8 to 19.4	9.9	9.2 to 10.6
36	35.5	34.2 to 36.9	17.7	17.1 to 18.4	9.5	8.9 to 10.1
37	35.0	33.8 to 36.1	16.9	16.4 to 17.5	9.0	8.5 to 9.5
38	34.0	33.0 to 34.9	16.2	15.8 to 16.7	8.4	8.1 to 8.8
39	32.8	32.0 to 33.6	15.7	15.3 to 16.1	7.8	7.6 to 8.1
40	31.9	31.2 to 32.7	15.2	14.8 to 15.6	7.5	7.2 to 7.7
41	31.7	30.9 to 32.5	15.0	14.6 to 15.4	7.5	7.2 to 7.7
42	32.2	31.1 to 33.4	14.8	14.3 to 15.3	7.9	7.5 to 8.3
43	33.5	31.4 to 35.6	14.8	14.0 to 15.7	8.6	7.9 to 9.5
44	35.1	31.7 to 38.6	14.8	13.5 to 16.2	9.7	8.4 to 11.2

SUPPLEMENTAL TABLE 8 Probability and 95% CIs of Low Educational Attainment at 25 Years According to Gestational Age and Parental Educational Level in Finland

Gestational Wk	Parental Educational Level					
	Lower		Intermediate		Higher	
	%	95% CI	%	95% CI	%	95% CI
25	18.9	7.4 to 40.3	16.3	9.0 to 27.7	12.1	5.0 to 26.5
26	19.7	10.0 to 35.2	15.3	9.8 to 23.2	10.1	5.2 to 18.7
27	20.5	12.9 to 31.2	14.5	10.5 to 19.7	8.6	5.3 to 13.5
28	21.2	15.2 to 28.8	13.8	10.9 to 17.4	7.5	5.2 to 10.5
29	21.6	16.5 to 27.8	13.3	10.9 to 16.1	6.7	5.0 to 9.0
30	21.9	17.1 to 27.5	12.9	10.8 to 15.3	6.3	4.8 to 8.2
31	21.9	17.5 to 27.0	12.5	10.7 to 14.7	6.1	4.7 to 7.8
32	21.8	17.9 to 26.2	12.3	10.7 to 14.1	5.9	4.8 to 7.4
33	21.5	18.4 to 25.1	12.0	10.7 to 13.4	5.9	4.9 to 7.1
34	21.3	18.8 to 23.9	11.7	10.7 to 12.8	5.9	5.2 to 6.8
35	20.9	19.1 to 22.9	11.4	10.7 to 12.2	5.9	5.3 to 6.5
36	20.6	19.1 to 22.2	11.1	10.5 to 11.7	5.9	5.4 to 6.3
37	20.4	19.1 to 21.7	10.6	10.1 to 11.2	5.7	5.3 to 6.1
38	20.2	19.2 to 21.2	10.2	9.7 to 10.6	5.5	5.2 to 5.8
39	20.2	19.3 to 21.1	9.8	9.4 to 10.2	5.2	5.0 to 5.5
40	20.3	19.4 to 21.3	9.7	9.4 to 10.1	5.2	5.0 to 5.4
41	20.7	19.7 to 21.8	10.2	9.8 to 10.6	5.4	5.2 to 5.7
42	21.5	19.5 to 23.6	11.4	10.7 to 12.1	6.1	5.6 to 6.7
43	22.5	18.5 to 27.0	13.3	11.8 to 14.9	7.3	6.1 to 8.7
44	23.6	17.3 to 31.4	15.8	13.2 to 18.8	8.9	6.7 to 11.7

SUPPLEMENTAL TABLE 9 Probability and 95% CIs of Low Educational Attainment at 25 Years According to Gestational Age and Parental Educational Level in Norway

Gestational Week	Parental Educational Level					
	Lower		Intermediate		Higher	
	%	95% CI	%	95% CI	%	95% CI
25	52.2	37.1 to 66.9	30.1	20.9 to 41.2	17.6	9.2 to 30.9
26	48.9	37.7 to 60.3	27.2	20.6 to 35.0	15.2	9.4 to 23.7
27	45.8	37.8 to 54.1	24.7	20.2 to 29.8	13.2	9.3 to 18.3
28	43.0	37.3 to 49.0	22.6	19.5 to 26.0	11.6	9.0 to 14.8
29	40.7	36.2 to 45.4	21.0	18.7 to 23.5	10.5	8.5 to 12.9
30	38.8	34.8 to 42.9	19.8	17.9 to 21.9	9.7	8.0 to 11.7
31	37.2	33.7 to 40.9	18.9	17.2 to 20.8	9.1	7.6 to 10.9
32	36.0	32.9 to 39.1	18.3	16.8 to 19.9	8.7	7.4 to 10.2
33	34.9	32.4 to 37.5	17.8	16.6 to 19.1	8.4	7.4 to 9.6
34	34.0	32.1 to 36.0	17.5	16.5 to 18.5	8.2	7.4 to 9.0
35	33.3	31.8 to 34.8	17.1	16.4 to 17.9	8.0	7.4 to 8.6
36	32.6	31.3 to 33.9	16.8	16.1 to 17.5	7.7	7.3 to 8.2
37	31.9	30.7 to 33.1	16.4	15.8 to 17.0	7.5	7.1 to 7.9
38	31.2	30.3 to 32.2	16.0	15.5 to 16.5	7.1	6.8 to 7.5
39	30.7	29.9 to 31.6	15.6	15.1 to 16.0	6.9	6.6 to 7.1
40	30.5	29.7 to 31.4	15.4	14.9 to 15.8	6.7	6.4 to 6.9
41	30.9	30.0 to 31.8	15.5	15.1 – 16.0	6.7	6.5 to 7.0
42	31.9	30.9 to 32.9	16.1	15.6 to 16.6	7.1	6.8 to 7.4
43	33.4	32.0 to 34.8	17.1	16.4 to 17.8	7.7	7.1 to 8.2
44	35.2	33.0 to 37.5	18.3	17.2 to 19.4	8.4	7.5 to 9.4

SUPPLEMENTAL TABLE 10 Probability and 95% CIs of Low Educational Attainment at 25 Years According to Gestational Age and Parental Educational Level in Sweden

Gestational Week	Parental Educational Level					
	Lower		Intermediate		Higher	
	%	95% CI	%	95% CI	%	95% CI
25	19.0	10.6 to 31.6	18.3	13.3 to 24.5	7.6	3.4 to 16.3
26	18.0	11.7 to 26.6	15.4	12.1 to 19.4	6.6	3.6 to 11.9
27	17.1	12.6 to 22.8	13.1	10.9 to 15.5	5.8	3.8 to 8.9
28	16.4	13.1 to 20.3	11.3	9.9 to 12.9	5.2	3.8 to 7.1
29	16.0	13.3 to 19.1	10.2	9.1 to 11.4	4.8	3.7 to 6.2
30	15.8	13.4 to 18.6	9.5	8.6 to 10.5	4.5	3.5 to 5.6
31	15.8	13.6 to 18.3	9.1	8.2 to 10.0	4.2	3.4 to 5.3
32	15.9	13.9 to 18.1	8.9	8.1 to 9.6	4.1	3.4 to 4.9
33	16.0	14.4 to 17.9	8.8	8.2 to 9.4	3.9	3.4 to 4.6
34	16.2	14.9 to 17.6	8.8	8.3 to 9.2	3.8	3.4 to 4.3
35	16.3	15.3 to 17.3	8.7	8.4 to 9.1	3.7	3.4 to 4.1
36	16.2	15.4 to 17.1	8.7	8.4 to 9.0	3.6	3.3 to 3.8
37	16.1	15.3 to 16.8	8.5	8.3 to 8.8	3.4	3.2 to 3.6
38	15.7	15.1 to 16.3	8.3	8.0 to 8.5	3.2	3.0 to 3.3
39	15.3	14.8 to 15.8	8.0	7.7 to 8.2	3.0	2.9 to 3.2
40	15.1	14.6 to 15.7	7.8	7.6 to 8.0	3.0	2.8 to 3.1
41	15.3	14.8 to 15.9	7.9	7.6 to 8.1	3.1	3.0 to 3.2
42	16.0	15.1 to 16.9	8.3	8.0 to 8.6	3.5	3.2 to 3.7
43	17.0	15.3 to 18.9	9.0	8.5 to 9.6	4.1	3.5 to 4.7
44	18.4	15.5 to 21.6	10.0	9.0 to 11.0	4.9	3.9 to 6.2