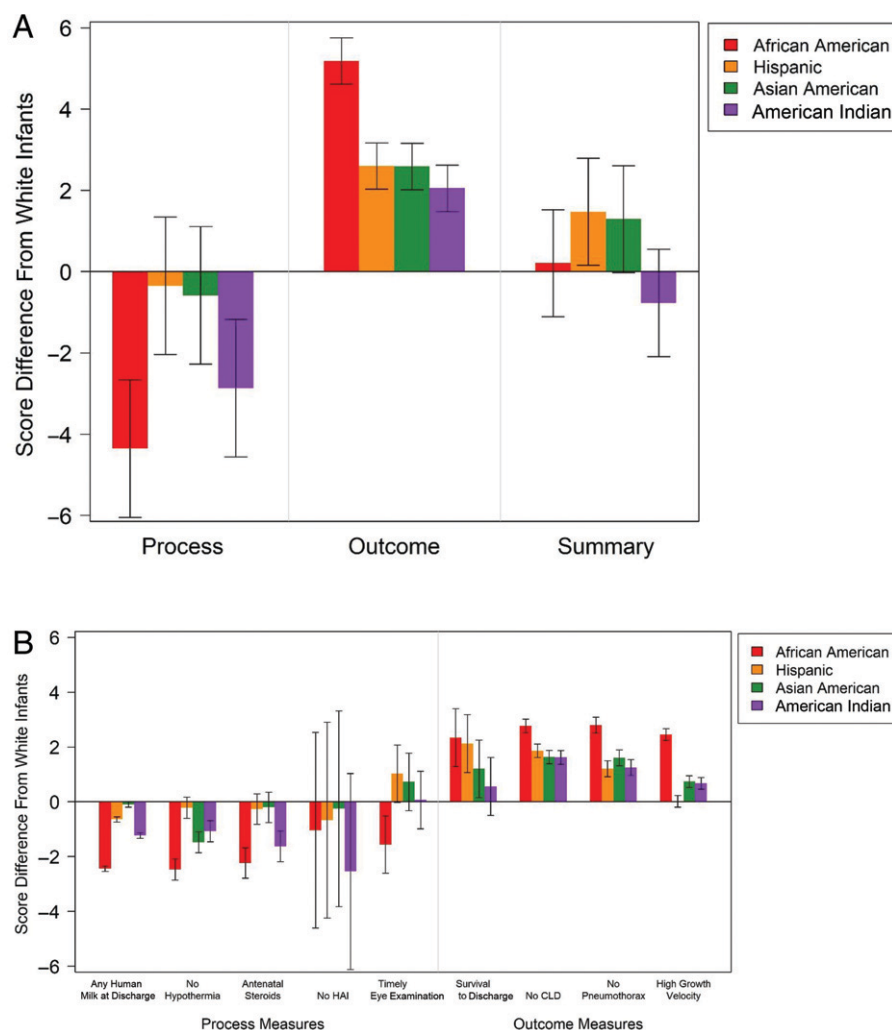
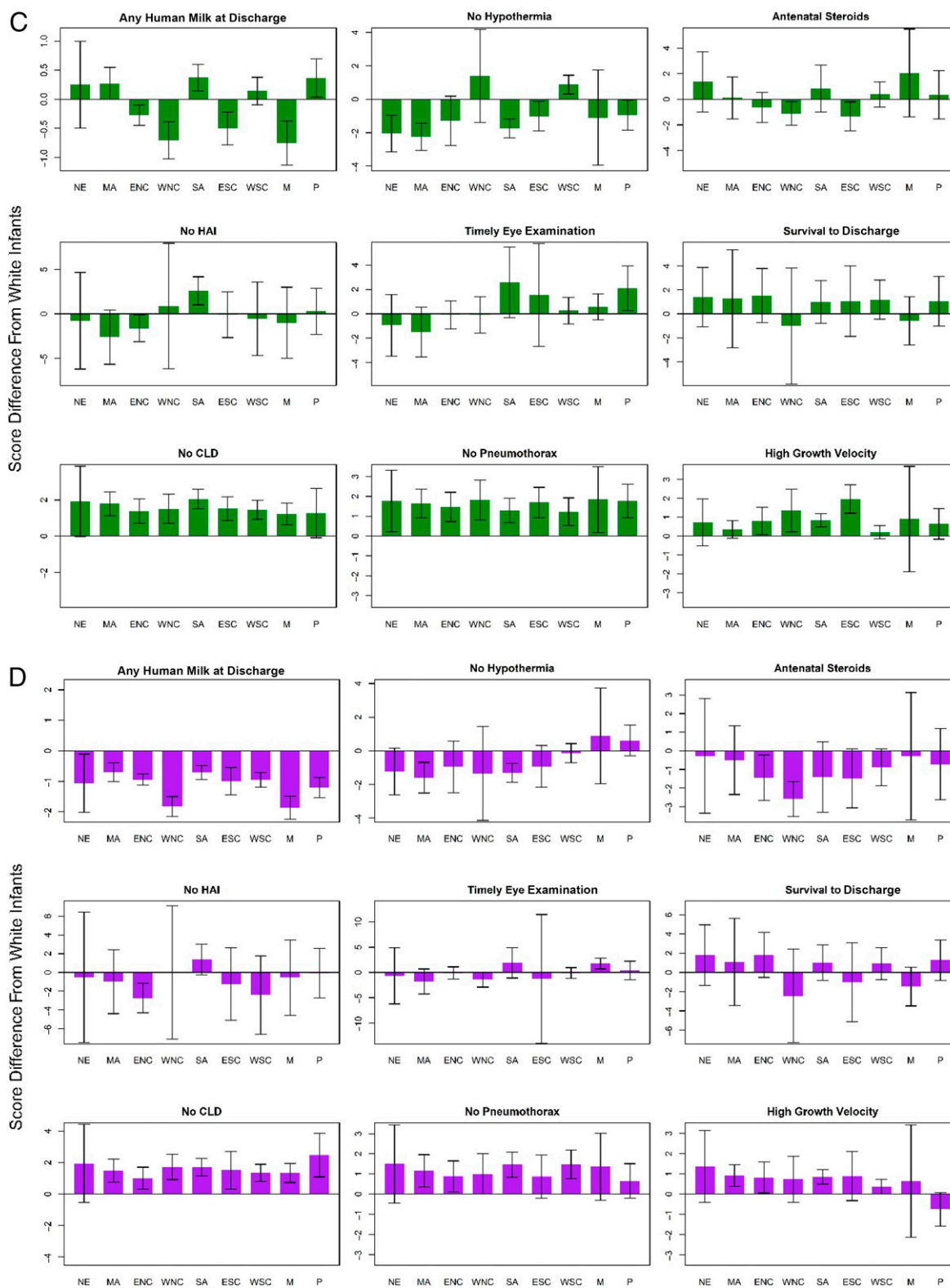


## Supplemental Materials



### SUPPLEMENTAL FIGURE 4

Baby-MONITOR subcomponent scores for each US Census Division by race and ethnicity compared to white infants in the same Census Division. A, Point estimates and 99% compatibility intervals indicated with error bars for Baby-MONITOR scores for African American infants compared with white infants. Positive scores indicate that African American infants scored better than white infants. B, Point estimates and 99% compatibility intervals indicated with error bars for Baby-MONITOR scores for Hispanic infants compared with white infants. Positive scores indicate that Hispanic infants scored better than white infants. C, Point estimates and 99% compatibility intervals indicated with error bars for Baby-MONITOR scores for Asian American infants compared with white infants. Positive scores indicate that Asian American infants scored better than white infants. D, Point estimates and 99% compatibility intervals indicated with error bars for Baby-MONITOR scores for American Indian infants compared with white infants. Positive scores indicate that American Indian infants scored better than white infants. CLD, chronic lung disease; ENC, East North Central (IL, IN, MI, OH, WI); ESC, East South Central (AL, MS, KY, TN); HAI, hospital-acquired infection; M, Mountain (AZ, CO, ID, MT, NM, NV, UT, WY); MA, Middle Atlantic (NJ, NY, PA); NE, New England (CT, MA, ME, NH, VT); P, Pacific (AK, CA, HI, OR, WA); SA, South Atlantic (DC, FL, GA, MD, NC, SC, WV, VA); WNC, West North Central (IA, KS, MN, MO, ND, NE, SD); WSC, West South Central (AR, LA, OK, TX).



**SUPPLEMENTAL FIGURE 4**

Continued.

**SUPPLEMENTAL TABLE 4** Baby-MONITOR Summary, Process, and Outcome Scores by Race and Ethnicity Compared With White Infants, Including Early Deaths

Measure and Race and Ethnicity	Race and Ethnicity Overall Compared With White Infants		Race and Ethnicity Within NICU Compared With White Infants in the Same NICU	
	No. Infants	Baby-MONITOR Score (99% CI)	No. NICUs	Mean Baby-MONITOR Score (99% CI)
Summary				
African American	52565	0.3 (−1.0 to 1.6)	696	0.25 (0.10 to 0.40)
Hispanic	31794	1.4 (0.1 to 2.7)	694	0.21 (0.06 to 0.37)
Asian American	9002	1.3 (0.0 to 2.6)	591	0.32 (0.16 to 0.49)
American Indian	1439	−0.8 (−2.1 to 0.5)	180	0.01 (−0.33 to 0.34)
Process				
African American	52559	−4.4 (−6.1 to −2.7)	698	−0.65 (−0.81 to −0.50)
Hispanic	31791	−0.4 (−2.1 to 1.3)	699	−0.13 (−0.27 to 0.02)
Asian American	9000	−0.6 (−2.3 to 1.1)	596	−0.11 (−0.27 to 0.04)
American Indian	1439	−2.9 (−4.6 to −1.2)	186	−0.46 (−0.78 to −0.13)
Outcome				
African American	52559	5.3 (4.8 to 5.8)	704	1.10 (0.94 to 1.26)
Hispanic	31790	2.4 (1.9 to 3.0)	701	0.45 (0.30 to 0.61)
Asian American	9002	2.6 (2.1 to 3.1)	626	0.61 (0.44 to 0.78)
American Indian	1439	2.0 (1.5 to 2.6)	216	0.52 (0.22 to 0.83)

**SUPPLEMENTAL TABLE 5** Baby-MONITOR Measure Scores by Race and Ethnicity Compared With White Infants, Including Early Deaths

Measure and Race and Ethnicity	Race and Ethnicity Overall Compared With White Infants		Race and Ethnicity Within NICU Compared With White Infants in the Same NICU	
	No. Infants	Baby-MONITOR Score (99% CI)	No. NICUs	Mean Baby-MONITOR Score (99% CI)
Any human milk at discharge				
African American	48802	−2.4 (−2.5 to −2.3)	707	−1.03 (−1.16 to −0.89)
Hispanic	29761	−0.6 (−0.7 to −0.5)	711	−0.25 (−0.37 to −0.14)
Asian American	8434	−0.1 (−0.2 to 0.0)	642	−0.10 (−0.21 to 0.02)
American Indian	1326	−1.2 (−1.3 to −1.1)	233	−0.77 (−1.03 to −0.50)
No hypothermia				
African American	51332	−2.5 (−2.9 to −2.1)	711	−0.24 (−0.35 to −0.14)
Hispanic	31266	−0.2 (−0.6 to 0.2)	715	−0.03 (−0.13 to 0.07)
Asian American	8849	−1.5 (−1.9 to −1.1)	651	−0.12 (−0.25 to 0.01)
American Indian	1409	−1.1 (−1.4 to −0.7)	236	−0.02 (−0.30 to 0.26)
Antenatal steroids				
African American	50522	−2.3 (−2.8 to −1.7)	712	−0.17 (−0.31 to −0.04)
Hispanic	30656	−0.3 (−0.9 to 0.2)	715	−0.04 (−0.18 to 0.10)
Asian American	8485	−0.3 (−0.8 to 0.3)	648	−0.01 (−0.15 to 0.13)
American Indian	1373	−1.6 (−2.2 to −1.1)	231	−0.20 (−0.48 to 0.09)
No hospital-acquired infection				
African American	51526	−1.0 (−4.6 to 2.6)	708	0.03 (−0.11 to 0.17)
Hispanic	31104	−0.7 (−4.2 to 2.9)	712	0.01 (−0.13 to 0.15)
Asian American	8849	−0.2 (−3.8 to 3.3)	649	−0.02 (−0.17 to 0.13)
American Indian	1398	−2.5 (−6.1 to 1.0)	235	−0.06 (−0.32 to 0.20)
Timely eye examination				
African American	37458	−1.6 (−2.6 to −0.5)	699	−0.04 (−0.16 to 0.09)
Hispanic	23012	1.0 (0.0 to 2.1)	699	0.03 (−0.10 to 0.15)
Asian American	6023	0.7 (−0.3 to 1.8)	600	0.07 (−0.07 to 0.21)
American Indian	996	0.1 (−1.0 to 1.1)	187	−0.04 (−0.32 to 0.24)
Survival to discharge				
African American	52329	2.6 (1.7 to 3.5)	712	0.31 (0.16 to 0.46)
Hispanic	31694	1.8 (0.9 to 2.7)	715	0.20 (0.04 to 0.35)
Asian American	8981	1.2 (0.3 to 2.1)	656	0.20 (0.03 to 0.36)
American Indian	1431	0.6 (−0.3 to 1.5)	236	0.04 (−0.23 to 0.31)

**SUPPLEMENTAL TABLE 5** Continued

Measure and Race and Ethnicity	Race and Ethnicity Overall Compared With White Infants		Race and Ethnicity Within NICU Compared With White Infants in the Same NICU	
	No. Infants	Baby-MONITOR Score (99% CI)	No. NICUs	Mean Baby-MONITOR Score (99% CI)
No chronic lung disease				
African American	49450	2.8 (2.5 to 3.0)	708	0.52 (0.40 to 0.64)
Hispanic	30015	1.9 (1.6 to 2.1)	712	0.32 (0.20 to 0.44)
Asian American	8525	1.6 (1.4 to 1.9)	645	0.31 (0.17 to 0.46)
American Indian	1329	1.6 (1.4 to 1.9)	232	0.36 (0.06 to 0.65)
No pneumothorax				
African American	52379	2.8 (2.5 to 3.1)	712	0.73 (0.57 to 0.89)
Hispanic	31683	1.2 (0.9 to 1.5)	716	0.33 (0.18 to 0.49)
Asian American	8975	1.6 (1.3 to 1.9)	654	0.45 (0.29 to 0.61)
American Indian	1433	1.2 (0.9 to 1.5)	239	0.50 (0.19 to 0.81)
High growth velocity				
African American	43291	2.5 (2.2 to 2.7)	704	0.63 (0.51 to 0.75)
Hispanic	26439	0.0 (−0.2 to 0.2)	701	0.02 (−0.11 to 0.15)
Asian American	7521	0.7 (0.5 to 1.0)	626	0.20 (0.07 to 0.34)
American Indian	1197	0.7 (0.5 to 0.9)	217	0.07 (−0.20 to 0.35)

**SUPPLEMENTAL TABLE 6** VON Members Included in This Analysis

Hospital Name	City	State
Brookwood Medical Center	Birmingham	Alabama
St Vincent Birmingham	Birmingham	Alabama
University of Alabama at Birmingham	Birmingham	Alabama
Huntsville Hospital	Huntsville	Alabama
University of South Alabama Children's and Women's Hospital	Mobile	Alabama
Baptist Medical Center East	Montgomery	Alabama
Baptist Medical Center South	Montgomery	Alabama
Children's Hospital at Providence	Anchorage	Alaska
Flagstaff Medical Center	Flagstaff	Arizona
Abrazo Arrowhead Campus	Glendale	Arizona
Banner Thunderbird Medical Center	Glendale	Arizona
Cardon Children's Medical Center	Mesa	Arizona
Arizona Children's Central Maricopa Integrated Health	Phoenix	Arizona
Banner Estrella Medical Center	Phoenix	Arizona
Banner University Medical Center Phoenix	Phoenix	Arizona
Phoenix Children's Hospital	Phoenix	Arizona
St Joseph's Hospital and Medical Center	Phoenix	Arizona
HonorHealth Scottsdale Shea Medical Center	Scottsdale	Arizona
Banner University Medical Center: Tucson	Tucson	Arizona
Washington Regional Medical Center	Fayetteville	Arkansas
Mercy Hospital Fort Smith	Fort Smith	Arkansas
Willow Creek Women's Hospital: NICU	Johnson	Arkansas
St Bernards Medical Center	Jonesboro	Arkansas
Arkansas Children's Hospital	Little Rock	Arkansas
University of Arkansas for Medical Sciences	Little Rock	Arkansas
Mercy Hospital Northwest Arkansas	Rogers	Arkansas
Anaheim Regional Medical Center	Anaheim	California
Kaiser Foundation Hospital Orange County: Anaheim	Anaheim	California
St Mary Medical Center	Apple Valley	California
Methodist Hospital of Southern California	Arcadia	California
Adventist Health Bakersfield	Bakersfield	California
Bakersfield Memorial Hospital	Bakersfield	California
Kern Medical Center	Bakersfield	California
Mercy Southwest Hospital	Bakersfield	California
Kaiser Foundation Hospital Baldwin Park	Baldwin Park	California

**SUPPLEMENTAL TABLE 6** Continued

Hospital Name	City	State
Alta Bates Summit Medical Center	Berkeley	California
Providence St Joseph Medical Center	Burbank	California
Mercy San Juan Medical Center	Carmichael	California
Arrowhead Regional Medical Center	Colton	California
Kaiser Foundation Hospital Downey	Downey	California
Rady Children's at Scripps Encinitas Memorial Hosp	Encinitas	California
Rady Children's at Palomar Medical Center Escondido	Escondido	California
Northbay Medical Center	Fairfield	California
Kaiser Foundation Hospital Fontana	Fontana	California
Fountain Valley Regional Hospital and Medical Center	Fountain Valley	California
Washington Hospital	Fremont	California
San Joaquin General Hospital	French Camp	California
Community Regional Medical Center	Fresno	California
Valley Children's Hospital at St Agnes Medical Center	Fresno	California
St Jude Medical Center	Fullerton	California
Adventist Health	Glendale	California
Glendale Memorial Hospital and Health Center	Glendale	California
Centinela Hospital Medical Center	Inglewood	California
Kaiser Foundation Hospital Orange County: Irvine	Irvine	California
Rady Children's at Scripps La Jolla	La Jolla	California
University of California, San Diego, Health La Jolla: Jacobs Medical Center	La Jolla	California
Grossmont Hospital, Women's Health Center	La Mesa	California
MemorialCare Saddleback Medical Center	Laguna Hills	California
Antelope Valley Hospital	Lancaster	California
Loma Linda University Children's Hospital	Loma Linda	California
Miller Children's and Women's Hospital at Long Beach	Long Beach	California
St Mary Medical Center	Long Beach	California
California Hospital Medical Center	Los Angeles	California
Cedars-Sinai Medical Center	Los Angeles	California
Children's Hospital Los Angeles	Los Angeles	California
Good Samaritan Hospital, Los Angeles	Los Angeles	California
Hollywood Presbyterian Medical Center	Los Angeles	California
Kaiser Foundation Hospital Los Angeles	Los Angeles	California
Kaiser Foundation Hospital West Los Angeles	Los Angeles	California
Los Angeles County and University of Southern California Medical Center	Los Angeles	California
University of California, Los Angeles, Mattel Children's Hospital	Los Angeles	California
Valley Children's Hospital	Madera	California
Providence Holy Cross Medical Center	Mission Hills	California
Children's Hospital of California Children's at Mission Hospital	Mission Viejo	California
Doctors Medical Center of Modesto	Modesto	California
Kaiser Foundation Hospital Modesto	Modesto	California
Memorial Medical Center	Modesto	California
Garfield Medical Center	Monterey Park	California
Riverside University Health System Medical Center	Moreno Valley	California
El Camino Hospital	Mountain View	California
Rady Children's at Rancho Springs Medical Center	Murrieta	California
Hoag Memorial Hospital, Presbyterian	Newport Beach	California
Northridge Hospital Medical Center	Northridge	California
Kaiser Foundation Hospital Oakland	Oakland	California
University of California, San Francisco, Benioff Children's Hospital - Oakland	Oakland	California
Tri-City Medical Center	Oceanside	California
Kaiser Foundation Hospital Ontario Campus	Ontario	California
Children's Hospital of California Children's Hospital	Orange	California
University of California, Irvine, Medical Center	Orange	California
St John's Regional Medical Center	Oxnard	California
Desert Regional Medical Center	Palm Springs	California
Lucile Packard Children's Hospital Stanford	Palo Alto	California
Kaiser Foundation Hospital Panorama City	Panorama City	California
Huntington Memorial Hospital	Pasadena	California
Pomona Valley Hospital Medical Center	Pomona	California

**SUPPLEMENTAL TABLE 6** Continued

Hospital Name	City	State
Mercy Medical Center - Redding	Redding	California
Redlands Community Hospital	Redlands	California
Lucile Packard Children's Hospital Special Care Nursery at Sequoia Hospital	Redwood City	California
Advanced Healthcare Management Corporation Parkview Community Medical Center	Riverside	California
Kaiser Foundation Hospital Riverside	Riverside	California
Riverside Community Hospital	Riverside	California
Kaiser Foundation Hospital Roseville	Roseville	California
Sutter Roseville Medical Center	Roseville	California
Anderson Lucchetti Women's and Children's Center	Sacramento	California
Methodist Hospital of Sacramento	Sacramento	California
University of California, Davis, Medical Center	Sacramento	California
Natividad Medical Center	Salinas	California
Salinas Valley Memorial Hospital	Salinas	California
St Bernardine Medical Center	San Bernardino	California
Kaiser Foundation Hospital San Diego	San Diego	California
Rady Children's Hospital San Diego	San Diego	California
Sharp Mary Birch Hospital for Women and Newborns	San Diego	California
University of California, San Diego, Medical Center: Hillcrest	San Diego	California
California Pacific Medical Center Van Ness Campus	San Francisco	California
Kaiser Foundation Hospital San Francisco	San Francisco	California
University of California, San Francisco, Benioff Children's Hospital in San Francisco	San Francisco	California
Zuckerberg San Francisco General Hospital and Trauma Center	San Francisco	California
San Gabriel Valley Medical Center	San Gabriel	California
Good Samaritan Hospital, San Jose	San Jose	California
O'Connor Hospital: San Jose	San Jose	California
Santa Clara Valley Medical Center	San Jose	California
Kaiser Foundation Hospital San Leandro	San Leandro	California
Sierra Vista Regional Medical Center	San Luis Obispo	California
Orange County Global Medical Center	Santa Ana	California
Santa Barbara Cottage Hospital	Santa Barbara	California
Kaiser Foundation Hospital Santa Clara	Santa Clara	California
Dignity Health Dominican Hospital	Santa Cruz	California
Marian Regional Medical Center	Santa Maria	California
Providence St John's Health Center	Santa Monica	California
Santa Monica, University of California, Los Angeles, Medical Center and Orthopaedic Hospital	Santa Monica	California
Santa Rosa Memorial Hospital	Santa Rosa	California
Sutter Santa Rosa Regional Hospital	Santa Rosa	California
Dameron Hospital Association	Stockton	California
St Joseph's Medical Center - Stockton	Stockton	California
Los Angeles County Olive View: University of California, Los Angeles, Medical Center	Sylmar	California
Providence Cedars-Sinai Tarzana Medical Center	Tarzana	California
Los Robles Regional Hospital & Medical Center	Thousand Oaks	California
Los Angeles County Harbour: University of California, Los Angeles, Medical Center	Torrance	California
Providence Little Company of Mary Medical Center	Torrance	California
Torrance Memorial Medical Center	Torrance	California
San Antonio Regional Hospital	Upland	California
Henry Mayo Newhall Memorial Hospital	Valencia	California
Valley Presbyterian Hospital	Van Nuys	California
Community Memorial Hospital of Ventura	Ventura	California
Ventura County Medical Center	Ventura	California
Kaweah Delta Healthcare District	Visalia	California
John Muir Health, Walnut Creek Medical Center	Walnut Creek	California
Kaiser Foundation Hospital Walnut Creek	Walnut Creek	California
Emanate Health: Queen of the Valley Hospital	West Covina	California
Presbyterian Intercommunity Hospital	Whittier	California
Kaiser Foundation Hospital Woodland Hills	Woodland Hills	California
University of Colorado Health Sciences Center	Aurora	Colorado
St Francis Medical Center	Colorado Springs	Colorado
Denver Health Medical Center	Denver	Colorado
Rocky Mountain Hospital for Children at Presbyterian St. Luke's Medical Center	Denver	Colorado

**SUPPLEMENTAL TABLE 6** Continued

Hospital Name	City	State
Rose Medical Center	Denver	Colorado
Saint Joseph Hospital	Denver	Colorado
Swedish Medical Center	Englewood	Colorado
Poudre Valley Hospital	Fort Collins	Colorado
St Mary's Hospital and Medical Center	Grand Junction	Colorado
Good Samaritan Medical Center	Lafayette	Colorado
Sky Ridge Medical Center	Lone Tree	Colorado
Yale-New Haven Children's at Bridgeport Hospital	Bridgeport	Connecticut
Danbury Hospital	Danbury	Connecticut
Connecticut Children's NICU at University of Connecticut Health Center	Farmington	Connecticut
Greenwich Hospital	Greenwich	Connecticut
Connecticut Children's Medical Center	Hartford	Connecticut
St Francis Hospital	Hartford	Connecticut
Hospital of Central Connecticut	New Britain	Connecticut
Yale-New Haven Children's Hospital	New Haven	Connecticut
Norwalk Hospital	Norwalk	Connecticut
Stamford Hospital	Stamford	Connecticut
Christiana Care Health Services	Newark	Delaware
MedStar Georgetown University Hospital	Washington	District of Columbia
Washington Hospital Center	Washington	District of Columbia
Brandon Regional Hospital	Brandon	Florida
Halifax Medical Center	Daytona Beach	Florida
Broward Health Medical Center Salah Foundation Children's Hospital	Fort Lauderdale	Florida
Golisano Children's Hospital of Southwest Florida	Fort Myers	Florida
Lawnwood Regional Medical Center and Heart Institute	Fort Pierce	Florida
North Florida Regional Medical Center, Inc	Gainesville	Florida
University of Florida Shands Hospital Gainesville	Gainesville	Florida
Joe DiMaggio Children's Hospital	Hollywood	Florida
University of Florida Health Jacksonville	Jacksonville	Florida
Wolfson Children's Hospital	Jacksonville	Florida
Northwest Medical Center	Margate	Florida
Baptist Children's Hospital	Miami	Florida
Jackson Memorial Hospital	Miami	Florida
Kendall Regional Medical Center	Miami	Florida
Nicklaus Children's Hospital	Miami	Florida
Jackson North Medical Center	North Miami Beach	Florida
AdventHealth for Children	Orlando	Florida
Nemours Children's Hospital	Orlando	Florida
Winnie Palmer Hospital for Women and Babies	Orlando	Florida
Gulf Coast Regional Medical Center	Panama City	Florida
Sacred Heart Health System	Pensacola	Florida
Plantation General Hospital	Plantation	Florida
Johns Hopkins All Children's Hospital	Saint Petersburg	Florida
All Children's at Sarasota Memorial	Sarasota	Florida
Tallahassee Memorial Hospital	Tallahassee	Florida
St Joseph's Children's Hospital	Tampa	Florida
Tampa General Hospital	Tampa	Florida
Women's Center: Advent Health Tampa	Tampa	Florida
Wellington Regional Medical Center	Wellington	Florida
St Mary's Hospital	West Palm Beach	Florida
Phoebe Putney Memorial Hospital	Albany	Georgia
Piedmont Athens Regional	Athens	Georgia
Emory University Hospital, Midtown	Atlanta	Georgia
Grady Memorial Hospital	Atlanta	Georgia
Northside Hospital	Atlanta	Georgia
Piedmont Hospital	Atlanta	Georgia
Augusta University Health System	Augusta	Georgia
Wellstar Cobb Hospital	Austell	Georgia
Medical Center at Columbus Regional	Columbus	Georgia
Piedmont Rockdale Hospital	Conyers	Georgia

**SUPPLEMENTAL TABLE 6** Continued

Hospital Name	City	State
Northside Hospital Forsyth	Cumming	Georgia
Hamilton Medical Center	Dalton	Georgia
Piedmont Fayette Hospital	Fayetteville	Georgia
Northeast Georgia Medical Center	Gainesville	Georgia
Gwinnett Hospital System	Lawrenceville	Georgia
Coliseum Medical Center	Macon	Georgia
Wellstar Kennestone Hospital	Marietta	Georgia
Southern Regional Medical Center	Riverdale	Georgia
Floyd Medical Center	Rome	Georgia
Memorial Health Savannah	Savannah	Georgia
St Joseph's/Candler Health System	Savannah	Georgia
Eastside Medical Center	Snellville	Georgia
Piedmont Henry Hospital	Stockbridge	Georgia
Kaiser Permanente Moanalua Medical Center	Honolulu	Hawaii
Kapiolani Medical Center for Women and Children	Honolulu	Hawaii
St Luke's Regional Medical Center	Boise	Idaho
Eastern Idaho Regional Medical Center	Idaho Falls	Idaho
St Luke's Meridian Medical Center	Meridian	Idaho
St Luke's Magic Valley	Twin Falls	Idaho
Rush Copley Medical Center	Aurora	Illinois
Memorial Hospital of Carbondale	Carbondale	Illinois
Advocate Illinois Masonic Medical Center	Chicago	Illinois
John H. Stroger, Jr, Hospital of Cook County	Chicago	Illinois
Mt. Sinai Hospital Medical Center	Chicago	Illinois
Northwestern Memorial	Chicago	Illinois
Rush University Medical Center	Chicago	Illinois
St Joseph Hospital Chicago	Chicago	Illinois
University of Chicago	Chicago	Illinois
University of Illinois at Chicago	Chicago	Illinois
Advocate Good Samaritan Hospital	Downers Grove	Illinois
Evanston Hospital	Evanston	Illinois
Adventist Hinsdale Hospital	Hinsdale	Illinois
St Alexius Medical Center	Hoffman Estates	Illinois
Amita Health St Joseph Medical Center	Joliet	Illinois
Ronald McDonald Children's Hospital at Loyola University Medical Center	Maywood	Illinois
Edward Hospital and Health Services	Naperville	Illinois
Advocate Children's Hospital-Oak Lawn	Oak Lawn	Illinois
Advocate Children's Hospital - Park Ridge	Park Ridge	Illinois
Children's Hospital of Illinois at Order of St Francis St Francis Medical Center	Peoria	Illinois
Javon Bea Hospital: Riverside	Rockford	Illinois
St John's Hospital	Springfield	Illinois
Carle Foundation Hospital	Urbana	Illinois
Central DuPage Hospital	Winfield	Illinois
Ascension St Vincent Carmel	Carmel	Indiana
Indiana University Health North Hospital	Carmel	Indiana
Franciscan Health Crown Point	Crown Point	Indiana
Ascension St Vincent Evansville	Evansville	Indiana
Dupont Hospital	Fort Wayne	Indiana
Lutheran Hospital of Indiana	Fort Wayne	Indiana
Parkview Women's and Children's Hospital	Fort Wayne	Indiana
St Joseph Hospital	Fort Wayne	Indiana
Ascension St Vincent Hospital: Women's	Indianapolis	Indiana
Community Hospital North Indianapolis	Indianapolis	Indiana
Franciscan St Francis Health	Indianapolis	Indiana
Riley Hospital for Children at Indiana University Health	Indianapolis	Indiana
Franciscan Health Lafayette	Lafayette	Indiana
Saint Joseph Regional Medical Center	Mishawaka	Indiana
Ball Memorial Hospital	Muncie	Indiana
Community Hospital	Munster	Indiana
Women's Hospital	Newburgh	Indiana



**SUPPLEMENTAL TABLE 6** Continued

Hospital Name	City	State
Memorial Hospital	South Bend	Indiana
Union Hospital	Terre Haute	Indiana
St Luke's Hospital	Cedar Rapids	Iowa
Genesis Medical Center	Davenport	Iowa
Blank Children's Hospital	Des Moines	Iowa
Mercy Medical Center	Des Moines	Iowa
University of Iowa Children's Hospital	Iowa City	Iowa
St Luke's Regional Medical Center	Sioux City	Iowa
University of Kansas Hospital Authority	Kansas City	Kansas
Overland Park Regional Medical Center	Overland Park	Kansas
Shawnee Mission Medical Center	Shawnee Mission	Kansas
Ascension Via Christi Hospital	Wichita	Kansas
Wesley Medical Center	Wichita	Kansas
Medical Center NICU Bowling Green	Bowling Green	Kentucky
St Elizabeth Healthcare	Edgewood	Kentucky
Hardin Memorial Hospital	Elizabethtown	Kentucky
Frankfort Regional Medical Center	Frankfort	Kentucky
Methodist Hospital	Henderson	Kentucky
Jennie Stuart Medical Center	Hopkinsville	Kentucky
Baptist Health Lexington	Lexington	Kentucky
Kentucky Children's Hospital	Lexington	Kentucky
Women's Hospital at St Joseph East	Lexington	Kentucky
Baptist Health Louisville	Louisville	Kentucky
Norton Children's Hospital	Louisville	Kentucky
Norton Women's and Children's Hospital	Louisville	Kentucky
University of Louisville Hospital	Louisville	Kentucky
Baptist Health Madisonville	Madisonville	Kentucky
Owensboro Health Regional Hospital	Owensboro	Kentucky
Baptist Health Paducah	Paducah	Kentucky
Christus St Frances Cabrini Hospital	Alexandria	Louisiana
Rapides Women's and Children's Hospital	Alexandria	Louisiana
Baton Rouge General Medical Center: Bluebonnet	Baton Rouge	Louisiana
Ochsner Medical Center Baton Rouge	Baton Rouge	Louisiana
Woman's Hospital	Baton Rouge	Louisiana
Lakeview Regional Medical Center	Covington	Louisiana
St Tammany Parish Hospital	Covington	Louisiana
Ochsner Medical Center WestBank	Gretna	Louisiana
North Oaks Medical Center	Hammond	Louisiana
Terrebonne General Medical Center	Houma	Louisiana
Lafayette General Medical Center	Lafayette	Louisiana
Our Lady of Lourdes Women's and Children's Hospital	Lafayette	Louisiana
Christus Lake Area Hospital	Lake Charles	Louisiana
Lake Charles Memorial Hospital for Women	Lake Charles	Louisiana
West Jefferson Medical Center	Marrero	Louisiana
East Jefferson General Hospital	Metairie	Louisiana
Tulane Lakeside Hospital	Metairie	Louisiana
St Francis Medical Center	Monroe	Louisiana
Children's Hospital of New Orleans	New Orleans	Louisiana
Ochsner Baptist Medical Center	New Orleans	Louisiana
Touro Infirmary	New Orleans	Louisiana
Christus Highland	Shreveport	Louisiana
Ochsner Health Shreveport: Academic Medical Center	Shreveport	Louisiana
Willis Knighton South	Shreveport	Louisiana
Slidell Memorial Hospital	Slidell	Louisiana
Eastern Maine Medical Center	Bangor	Maine
Barbara Bush Children's at Maine Medical	Portland	Maine
Anne Arundel Medical Center	Annapolis	Maryland
Franklin Square Hospital Center	Baltimore	Maryland
Greater Baltimore Medical Center	Baltimore	Maryland
Johns Hopkins Bayview Medical Center Hopkins Bayview Medical Center	Baltimore	Maryland

**SUPPLEMENTAL TABLE 6** Continued

Hospital Name	City	State
Johns Hopkins Hospital	Baltimore	Maryland
Mercy Medical Center: Baltimore	Baltimore	Maryland
Sinai Hospital of Baltimore	Baltimore	Maryland
St Agnes Hospital	Baltimore	Maryland
Univ of Maryland Medical Center	Baltimore	Maryland
Walter Reed National Military Medical Center NICU	Bethesda	Maryland
Prince George's Hospital Center	Cheverly	Maryland
Howard County General Hospital	Columbia	Maryland
Frederick Memorial Hospital	Frederick	Maryland
Shady Grove Adventist Hospital	Rockville	Maryland
Holy Cross Hospital	Silver Spring	Maryland
University of Maryland St Joseph Medical Center	Towson	Maryland
Beth Israel Deaconess Medical Center	Boston	Massachusetts
Boston Medical Center	Boston	Massachusetts
Brigham and Women's Hospital	Boston	Massachusetts
Massachusetts General Hospital for Children	Boston	Massachusetts
Tufts Medical Center	Boston	Massachusetts
Steward St Elizabeth's Medical Center	Brighton	Massachusetts
South Shore Hospital	South Weymouth	Massachusetts
Baystate Medical Center	Springfield	Massachusetts
UMass Memorial Healthcare	Worcester	Massachusetts
St Joseph Mercy Hospital	Ann Arbor	Michigan
University of Michigan, C.S. Mott Children's Hospital, Brandon NICU	Ann Arbor	Michigan
Beaumont Hospital: Dearborn	Dearborn	Michigan
Ascension St John Hospital	Detroit	Michigan
Children's Hospital of Michigan	Detroit	Michigan
Henry Ford Hospital	Detroit	Michigan
Hutzel Women's Hospital	Detroit	Michigan
Hurley Medical Center	Flint	Michigan
Helen DeVos Children's Hospital	Grand Rapids	Michigan
Mercy Health Saint Mary's	Grand Rapids	Michigan
Children's Hospital at Bronson	Kalamazoo	Michigan
Sparrow Hospital	Lansing	Michigan
UPHS-Marquette	Marquette	Michigan
St Joseph Mercy Oakland	Pontiac	Michigan
William Beaumont Hospital	Royal Oak	Michigan
Covenant Healthcare	Saginaw	Michigan
Ascension Providence Hospital Southfield Campus	Southfield	Michigan
Munson Medical Center	Traverse City	Michigan
Essentia Health: St Mary's Children's Hospital	Duluth	Minnesota
Children's Minnesota	Minneapolis	Minnesota
Hennepin County Medical Center	Minneapolis	Minnesota
University of Minnesota Masonic Children's Hospital	Minneapolis	Minnesota
North Memorial Medical Center	Robbinsdale	Minnesota
Mayo Foundation	Rochester	Minnesota
St Cloud Hospital	Saint Cloud	Minnesota
Children's Minnesota: St Paul	Saint Paul	Minnesota
Merit Health River Oaks	Flowood	Mississippi
Merit Health Woman's Hospital	Flowood	Mississippi
Delta Regional Medical Center	Greenville	Mississippi
Memorial Hospital at Gulfport	Gulfport	Mississippi
Forrest General Hospital	Hattiesburg	Mississippi
Merit Health Wesley	Hattiesburg	Mississippi
Children's Hospital at University of Mississippi Health Care	Jackson	Mississippi
Mississippi Baptist Health Systems	Jackson	Mississippi
St Dominic, Jackson Memorial Hospital	Jackson	Mississippi
Anderson Regional Medical Center	Meridian	Mississippi
North Mississippi Medical Center	Tupelo	Mississippi
St Francis Medical Center	Cape Girardeau	Missouri
Women's and Children's Hospital, University of Missouri	Columbia	Missouri

**SUPPLEMENTAL TABLE 6** Continued

Hospital Name	City	State
Centerpoint Medical Center	Independence	Missouri
Freeman Hospital and Health System	Joplin	Missouri
Mercy Hospital Joplin	Joplin	Missouri
Children's Mercy Kansas City	Kansas City	Missouri
Research Medical Center	Kansas City	Missouri
St Luke's Hospital	Kansas City	Missouri
Truman Medical Center	Kansas City	Missouri
Mercy Children's Hospital: St Louis	Saint Louis	Missouri
SSM Health Cardinal Glennon Children's Hospital	Saint Louis	Missouri
St Louis Children's Hospital	Saint Louis	Missouri
Cox Health Neonatology	Springfield	Missouri
Mercy Kids Springfield	Springfield	Missouri
Billings Clinic	Billings	Montana
St Vincent Hospital and Health Center	Billings	Montana
Benefis Healthcare	Great Falls	Montana
Kalispell Regional Medical Center	Kalispell	Montana
Community Medical Center	Missoula	Montana
Bryan Medical Center	Lincoln	Nebraska
Catholic Health Initiatives Health St Elizabeth	Lincoln	Nebraska
Catholic Health Initiatives Health Bergan Mercy Medical Center	Omaha	Nebraska
Creighton University Medical Center	Omaha	Nebraska
Methodist Women's Hospital	Omaha	Nebraska
Nebraska Medical Center	Omaha	Nebraska
St Rose Dominican Hospital Siena Campus	Henderson	Nevada
Children's Hospital of Nevada at University Medical Center	Las Vegas	Nevada
Sunrise Hospital and Medical Center	Las Vegas	Nevada
Dartmouth Hitchcock Medical Center	Lebanon	New Hampshire
Elliot Hospital	Manchester	New Hampshire
Children's at Cooper University Medical Center	Camden	New Jersey
Our Lady of Lourdes Medical Center	Camden	New Jersey
Hackensack University Medical Center	Hackensack	New Jersey
Jersey City Medical Center	Jersey City	New Jersey
Saint Barnabas Medical Center	Livingston	New Jersey
Monmouth Medical Center	Long Branch	New Jersey
Goryeb Children's Hospital	Morristown	New Jersey
Jersey Shore University Medical Center	Neptune	New Jersey
Robert Wood Johnson University Hospital	New Brunswick	New Jersey
St Peter's Medical Center	New Brunswick	New Jersey
Children's Hospital of New Jersey at Newark Beth Israel Medical Center	Newark	New Jersey
University Hospital: Rutgers New Jersey Medical School	Newark	New Jersey
St Joseph Hospital and Medical Center	Paterson	New Jersey
Capital Health Medical Center: Hopewell	Pennington	New Jersey
Atlanticare Regional Medical Center: NICU	Pomona	New Jersey
Overlook Medical Center	Summit	New Jersey
Inspira Health Network	Vineland	New Jersey
Virtua Hospital Systems	Voorhees	New Jersey
Children's Medical Center at Presbyterian Hospital	Albuquerque	New Mexico
Lovelace Women's Hospital	Albuquerque	New Mexico
University of New Mexico Health Sciences Center	Albuquerque	New Mexico
Albany Medical Center	Albany	New York
St Peter's Hospital	Albany	New York
Jacobi Medical Center	Bronx	New York
Montefiore Medical Center: Wakefield Division	Bronx	New York
Weiler Hospital Montefiore	Bronx	New York
Brookdale Hospital Medical Center	Brooklyn	New York
Brooklyn Hospital Center	Brooklyn	New York
Maimonides Medical Center	Brooklyn	New York
University Hospital of Brooklyn	Brooklyn	New York
Sisters of Charity Hospital	Buffalo	New York
Arnot Ogden Medical Center	Elmira	New York

**SUPPLEMENTAL TABLE 6** Continued

Hospital Name	City	State
North Shore University Hospital	Manhasset	New York
New York University Winthrop	Mineola	New York
Northern Westchester Hospital	Mount Kisco	New York
Cohen Children's Medical Center of New York	New Hyde Park	New York
Bellevue Hospital	New York	New York
Columbia University Medical Center	New York	New York
Lenox Hill Hospital	New York	New York
Mt. Sinai Kravis Children's Hospital	New York	New York
Tisch Hospital, New York University Medical Center	New York	New York
Weill Cornell Medical Center	New York	New York
Vassar Brothers Hospital	Poughkeepsie	New York
Golisano Children's Hospital at Strong	Rochester	New York
Richmond University Medical Center	Staten Island	New York
Staten Island University Hospital	Staten Island	New York
Stony Brook University Medical Center	Stony Brook	New York
St Joseph's Health Center	Syracuse	New York
Good Samaritan Hospital Medical Center	West Islip	New York
Mission Children's Hospital	Asheville	North Carolina
North Carolina Children's Hospital	Chapel Hill	North Carolina
Carolinas Medical Center	Charlotte	North Carolina
Novant Health Presbyterian Medical Center	Charlotte	North Carolina
Jeff Gordon Children's Hospital at Carolinas Medical Center	Concord	North Carolina
Duke University	Durham	North Carolina
Cape Fear Valley Medical Center	Fayetteville	North Carolina
CaroMont Regional Medical Center	Gastonia	North Carolina
Cone Health Women's Hospital	Greensboro	North Carolina
Vidant Medical Center	Greenville	North Carolina
Catawba Valley Medical Center	Hickory	North Carolina
Onslow Memorial Hospital	Jacksonville	North Carolina
FirstHealth Moore Regional Hospital	Pinehurst	North Carolina
Rex Hospital	Raleigh	North Carolina
WakeMedical Center	Raleigh	North Carolina
New Hanover Regional Medical Center: Betty H. Cameron Women and Children's Hospital	Wilmington	North Carolina
Brenner Children's Hospital at Wake Forest Baptist Medical Center	Winston-Salem	North Carolina
Forsyth Memorial Hospital	Winston-Salem	North Carolina
Sanford Bismarck Medical Center	Bismarck	North Dakota
Essentia Health	Fargo	North Dakota
Sanford Medical Center Fargo	Fargo	North Dakota
Altru Health System	Grand Forks	North Dakota
Trinity Hospital	Minot	North Dakota
Akron Children's Hospital	Akron	Ohio
Akron Children's Special Care Nursery at Summa	Akron	Ohio
Akron Children's NICU at St Elizabeth :Boardman	Boardman	Ohio
Akron Children's NICU at Aultman	Canton	Ohio
Children's Hospital Medical Center Cincinnati	Cincinnati	Ohio
Good Samaritan Hospital	Cincinnati	Ohio
University Hospital, Cincinnati	Cincinnati	Ohio
Cleveland Clinic Foundation	Cleveland	Ohio
Fairview Hospital	Cleveland	Ohio
MetroHealth Medical Center	Cleveland	Ohio
Rainbow Babies and Children's Hospital	Cleveland	Ohio
Mount Carmel East	Columbus	Ohio
Nationwide Children's Hospital at Doctor's Hospital West	Columbus	Ohio
Nationwide Children's Hospital at Grant Medical Center	Columbus	Ohio
Nationwide Children's Hospital at Riverside Methodist Hospital	Columbus	Ohio
Nationwide Children's Hospital Main Campus	Columbus	Ohio
Nationwide Children's Hospital NICU at Ohio State Medical Center	Columbus	Ohio
Dayton Children's Hospital	Dayton	Ohio
Miami Valley Hospital	Dayton	Ohio
Nationwide Children's Hospital at Dublin Methodist Hospital	Dublin	Ohio

**SUPPLEMENTAL TABLE 6** Continued

Hospital Name	City	State
Mount Carmel Grove City	Grove City	Ohio
Kettering Medical Center	Kettering	Ohio
Cleveland Clinic Children's - Hillcrest NICU	Mayfield Heights	Ohio
Mercy Children's Hospital	Toledo	Ohio
Russell J. Ebeid Children's Hospital	Toledo	Ohio
Nationwide Children's Hospital NICU at Mount Carmel St Ann's Hospital	Westerville	Ohio
Mercy Hospital Oklahoma City	Oklahoma City	Oklahoma
Oklahoma University Health Sciences Center	Oklahoma City	Oklahoma
Henry Zarrow NICU	Tulsa	Oklahoma
Oklahoma Stat University Medical Center	Tulsa	Oklahoma
Peggy V. Helmerich Women's Center	Tulsa	Oklahoma
St John Medical Center	Tulsa	Oklahoma
St Charles Health Care	Bend	Oregon
Kaiser Sunnyside Medical Center	Clackamas	Oregon
Rogue Regional Medical Center	Medford	Oregon
Oregon Health and Science University	Portland	Oregon
Providence Portland Medical Center	Portland	Oregon
Providence St Vincent Medical Center	Portland	Oregon
Randall Children's Hospital at Legacy Emanuel	Portland	Oregon
Salem Hospital	Salem	Oregon
Sacred Heart Medical Center	Springfield	Oregon
Abington Memorial Hospital	Abington	Pennsylvania
Lehigh Valley Health Network	Allentown	Pennsylvania
St Luke's University Hospital	Bethlehem	Pennsylvania
Bryn Mawr Hospital	Bryn Mawr	Pennsylvania
Holy Spirit Hospital	Camp Hill	Pennsylvania
Geisinger Medical Center	Danville	Pennsylvania
Penn Highlands DuBois	DuBois	Pennsylvania
Einstein Medical Center Montgomery	East Norriton	Pennsylvania
Hamot Medical Center	Erie	Pennsylvania
St Vincent Health Center	Erie	Pennsylvania
Pinnacle Health Hospitals	Harrisburg	Pennsylvania
Penn State Children's Hospital	Hershey	Pennsylvania
Conemaugh Memorial Medical Center	Johnstown	Pennsylvania
Lancaster General Health: Women and Babies Hospital	Lancaster	Pennsylvania
Holy Redeemer Hospital and Medical Center	Meadowbrook	Pennsylvania
Riddle Hospital	Media	Pennsylvania
Children's Hospital of Philadelphia Newborn Center	Philadelphia	Pennsylvania
Einstein Medical Center Philadelphia	Philadelphia	Pennsylvania
Hahnemann University Hospital	Philadelphia	Pennsylvania
Hospital of the University of Pennsylvania	Philadelphia	Pennsylvania
Pennsylvania Hospital	Philadelphia	Pennsylvania
Temple University Hospital	Philadelphia	Pennsylvania
Thomas Jefferson University Hospital	Philadelphia	Pennsylvania
Magee-Womens Hospital of University of Pittsburgh Medical Center	Pittsburgh	Pennsylvania
Western Pennsylvania Hospital	Pittsburgh	Pennsylvania
Reading Hospital-Tower Health	Reading	Pennsylvania
Moses Taylor Hospital	Scranton	Pennsylvania
Crozer Chester Medical Center	Upland	Pennsylvania
Children's Hospital of Philadelphia Newborn Care at Chester County Hospital	West Chester	Pennsylvania
Geisinger Wyoming Valley Medical Center	Wilkes-Barre	Pennsylvania
Lankenau Medical Center	Wynnewood	Pennsylvania
WellSpan York Hospital	York	Pennsylvania
Women and Infants Hospital	Providence	Rhode Island
Medical University of South Carolina	Charleston	South Carolina
Trident Medical Center	Charleston	South Carolina
Palmetto Health Baptist, Women's and Neonatal Services	Columbia	South Carolina
Palmetto Health Richland	Columbia	South Carolina
McLeod Regional Medical Center	Florence	South Carolina
Children's Hospital of Greenville	Greenville	South Carolina

**SUPPLEMENTAL TABLE 6** Continued

Hospital Name	City	State
Piedmont Medical Center	Rock Hill	South Carolina
Spartanburg Regional Healthcare System	Spartanburg	South Carolina
Summerville Medical Center	Summerville	South Carolina
Rapid City Regional Hospital	Rapid City	South Dakota
Avera McKennan	Sioux Falls	South Dakota
Boekelheide NICU at Sanford Health	Sioux Falls	South Dakota
Children's Hospital at Erlanger	Chattanooga	Tennessee
Parkridge East Hospital	Chattanooga	Tennessee
TriStar Summit Medical Center	Hermitage	Tennessee
Jackson Madison County General Hospital	Jackson	Tennessee
Niswonger Children's Hospital	Johnson City	Tennessee
East Tennessee Children's Hospital	Knoxville	Tennessee
University of Tennessee Medical Center	Knoxville	Tennessee
Baptist Memorial Hospital for Women	Memphis	Tennessee
Regional One Health	Memphis	Tennessee
Children's Hospital at TriStar Centennial	Nashville	Tennessee
Monroe Carell Jr Children's Hospital Vanderbilt	Nashville	Tennessee
Abilene Regional Medical Center	Abilene	Texas
Hendrick Medical Center	Abilene	Texas
Baptist St Anthony's Health System	Amarillo	Texas
Texas Tech University Health Science Center	Amarillo	Texas
Medical City Arlington	Arlington	Texas
Texas Health Arlington Memorial Hospital	Arlington	Texas
Dell Children's Medical Center of Central Texas	Austin	Texas
North Austin Medical Center	Austin	Texas
Seton Medical Center	Austin	Texas
St David's Medical Center	Austin	Texas
Christus Southeast Texas Hospital	Beaumont	Texas
Hospital Corporation of America Houston Healthcare Conroe	Conroe	Texas
Christus Spohn Hospital Corpus Christi South	Corpus Christi	Texas
Corpus Christi Medical Center	Corpus Christi	Texas
Driscoll Children's Hospital	Corpus Christi	Texas
Baylor Healthcare System	Dallas	Texas
Medical City Dallas	Dallas	Texas
Methodist Dallas Medical Center	Dallas	Texas
Presbyterian Hospital of Dallas	Dallas	Texas
Texas Health Presbyterian Hospital Dallas	Dallas	Texas
University of Texas Southwestern Medical Center Dallas	Dallas	Texas
William P. Clements Jr University Hospital	Dallas	Texas
Women's Hospital At Renaissance	Edinburg	Texas
Del Sol Medical Center	El Paso	Texas
El Paso Children's Hospital	El Paso	Texas
Las Palmas Medical Center	El Paso	Texas
Texas Health Presbyterian Hospital Flower Mound	Flower Mound	Texas
Baylor All Saints Medical Center	Fort Worth	Texas
Cook Children's Medical Center	Fort Worth	Texas
Harris Methodist Fort Worth Hospital	Fort Worth	Texas
John Peter Smith Hospital	Fort Worth	Texas
Medical City Alliance	Fort Worth	Texas
University of Texas Medical Branch	Galveston	Texas
Valley Baptist Medical Center: Harlingen	Harlingen	Texas
Ben Taub General Hospital	Houston	Texas
Children's Memorial Hermann Hospital	Houston	Texas
Hospital Corporation of America Houston Healthcare Cypress Fairbanks	Houston	Texas
Houston Methodist West Hospital	Houston	Texas
Lyndon B. Johnson General Hospital	Houston	Texas
Memorial Hermann Memorial City Medical Center	Houston	Texas
Memorial Hermann Southeast	Houston	Texas
Memorial Hermann Southwest	Houston	Texas
Methodist Willowbrook Hospital	Houston	Texas

**SUPPLEMENTAL TABLE 6** Continued

Hospital Name	City	State
St Joseph Hospital	Houston	Texas
Texas Children's Hospital, Baylor College of Medicine	Houston	Texas
Woman's Hospital of Texas	Houston	Texas
Memorial Hermann Northeast Hospital	Humble	Texas
Memorial Hermann Katy Hospital	Katy	Texas
Hospital Corporation of America Houston Healthcare Kingwood	Kingwood	Texas
Medical City Lewisville	Lewisville	Texas
Christus Good Shepherd Medical Center	Longview	Texas
Longview Regional Medical Center	Longview	Texas
Covenant Children's Hospital	Lubbock	Texas
Methodist Mansfield Medical Center	Mansfield	Texas
Medical City of McKinney	McKinney	Texas
Hospital Corporation of America Houston Healthcare Southeast	Pasadena	Texas
Medical City Plano	Plano	Texas
Texas Health Presbyterian Hospital Plano	Plano	Texas
Methodist Richardson Medical Center	Richardson	Texas
Lake Pointe Medical Center	Rowlett	Texas
Children's Hospital of San Antonio	San Antonio	Texas
Methodist Children's Hospital	San Antonio	Texas
Methodist Stone Oak Hospital	San Antonio	Texas
Metropolitan Methodist Hospital	San Antonio	Texas
North Central Baptist Hospital	San Antonio	Texas
St Luke's Baptist Hospital	San Antonio	Texas
University Hospital San Antonio	San Antonio	Texas
Baylor Scott and White McLane Children's Medical Center	Temple	Texas
Christus St Michael Health System	Texarkana	Texas
Houston Methodist: The Woodlands Hospital	The Woodlands	Texas
Memorial Hermann: The Woodlands	The Woodlands	Texas
St Luke's: The Woodlands Hospital	The Woodlands	Texas
Texas Children's Hospital: The Woodlands	The Woodlands	Texas
Christus Trinity Mother Frances Health System	Tyler	Texas
DeTar Hospital North	Victoria	Texas
Hospital Corporation of America Houston Healthcare Clear Lake	Webster	Texas
Intermountain Medical Center	Murray	Utah
McKay Dee Hospital Center	Ogden	Utah
Ogden Regional Medical Center	Ogden	Utah
Timpanogos Regional Hospital	Orem	Utah
Utah Valley Regional Medical Center	Provo	Utah
Dixie Regional Medical Center	Saint George	Utah
St Mark's Hospital	Salt Lake City	Utah
University of Utah Health Sciences Center	Salt Lake City	Utah
University of Vermont Children's Hospital	Burlington	Vermont
Inova Alexandria Hospital	Alexandria	Virginia
Virginia Hospital Center	Arlington	Virginia
University of Virginia	Charlottesville	Virginia
Inova Fair Oaks Hospital	Fairfax	Virginia
Inova Children's Hospital	Falls Church	Virginia
Mary Washington Hospital	Fredericksburg	Virginia
Spotsylvania Regional Medical Center	Fredericksburg	Virginia
Inova Loudoun Hospital	Leesburg	Virginia
Centra Health, Virginia Baptist Hospital	Lynchburg	Virginia
Children's Hospital of the King's Daughters	Norfolk	Virginia
Reston Hospital Center	Reston	Virginia
Bon Secours St Mary's Hospital	Richmond	Virginia
Children's Hospital of Richmond at Virginia Commonwealth University	Richmond	Virginia
Chippenham and Johnston-Willis Medical Center, Chippenham Campus	Richmond	Virginia
Henrico Doctors' Hospital	Richmond	Virginia
Johnston-Willis Hospital	Richmond	Virginia
Carilion Clinic Children's Hospital	Roanoke	Virginia
Winchester Medical Center	Winchester	Virginia

**SUPPLEMENTAL TABLE 6** Continued

Hospital Name	City	State
Sentara Northern Virginia Medical Center	Woodbridge	Virginia
Overlake Hospital Medical Center	Bellevue	Washington
Providence Regional Medical Center Everett	Everett	Washington
Evergreen Health	Kirkland	Washington
University of Washington Medicine: Valley Medical Center	Renton	Washington
Kadlec Regional Medical Center	Richland	Washington
Swedish Medical Center	Seattle	Washington
University of Washington Medical Center	Seattle	Washington
Deaconess Hospital	Spokane	Washington
Providence Sacred Heart Medical Center and Children's Hospital	Spokane	Washington
MultiCare Health System: Tacoma General Hospital	Tacoma	Washington
St Joseph Medical Center	Tacoma	Washington
Legacy Salmon Creek Hospital	Vancouver	Washington
PeaceHealth Southwest Medical Center	Vancouver	Washington
Yakima Valley Memorial Hospital	Yakima	Washington
Charleston Area Medical Center	Charleston	West Virginia
Cabell Huntington Hospital, Inc	Huntington	West Virginia
Berkeley Medical Center	Martinsburg	West Virginia
West Virginia University School of Medicine	Morgantown	West Virginia
Ascension NE Wisconsin: St Elizabeth Campus	Appleton	Wisconsin
Aurora Baycare Medical Center	Green Bay	Wisconsin
St Vincent Hospital	Green Bay	Wisconsin
Gundersen Lutheran Medical Center	La Crosse	Wisconsin
Meriter Hospital	Madison	Wisconsin
Sisters of St Mary Health St Mary's Hospital Madison	Madison	Wisconsin
Marshfield Medical Center - Marshfield	Marshfield	Wisconsin
Ascension Columbia St Mary's Hospital Milwaukee	Milwaukee	Wisconsin
Ascension SE Wisconsin Hospital: St Joseph Campus	Milwaukee	Wisconsin
Aurora Sinai Medical Center	Milwaukee	Wisconsin
Children's Hospital of Wisconsin	Milwaukee	Wisconsin
Children's Hospital of Wisconsin, Fox Valley	Neenah	Wisconsin
Ascension All Saints Hospital	Racine	Wisconsin
Waukesha Memorial Hospital	Waukesha	Wisconsin
Aspirus Wausau Hospital	Wausau	Wisconsin
Aurora Women's Pavilion	West Allis	Wisconsin