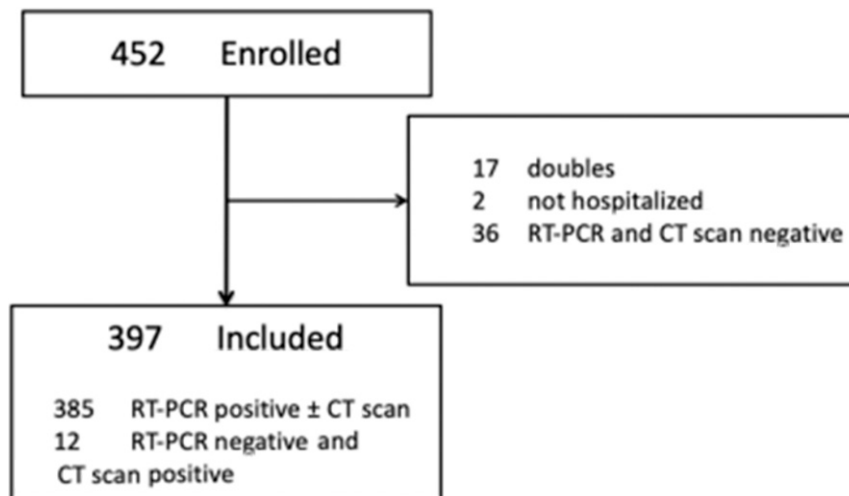
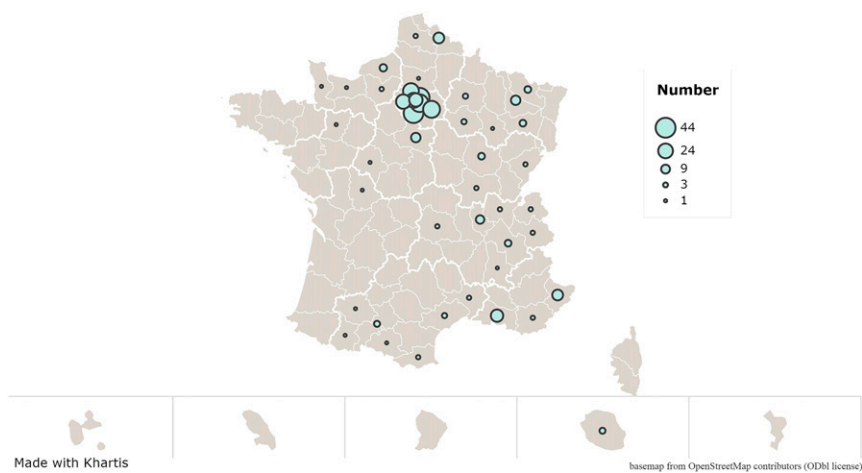


## Supplemental Information



**SUPPLEMENTAL FIGURE 3**  
Flowchart of children in the study.



**SUPPLEMENTAL FIGURE 4**  
Geographic distribution of children hospitalized with SARS-CoV-2 infection in France ( $N = 397$ ). Image made with Khartis.

**SUPPLEMENTAL TABLE 5** Description of Patients With Pattern 2 (*n* = 158)

Clinical Description	<i>n</i>
LRTI	95
Digestive form	24
Isolated fever	28
Neurologic symptoms	8
Febrile seizure	6
Other neurologic symptoms (ptosis, VI deficit)	2
Febrile neutropenia	1
Cough and chest pain in a patient receiving anti-TNF treatment	1
Fever and chronic condition (cerebral palsy)	1

Pattern 2: patients with SARS-CoV-2 infection requiring hospital treatment. TNF, tumor necrosis factor.

**SUPPLEMENTAL TABLE 6** Description of Final Diagnosis for Patients With Pattern 4 (*n* = 62)

Clinical Description	<i>n</i>
Admitted for acute pathology or condition	51
Surgical disease	19
Accidental (burns or trauma)	10
Infectious disease	20
Urinary tract infection	11
Severe bacterial infection	4
Skin infections	1
Other	4
Prematurity (admitted at birth)	2
Admitted for chronic disease	13
Hematologic disease needing transfusion, chemotherapy	6
Other chronic conditions (pulmonary disease, metabolic disease)	3
Psychiatric disorder	4

Hospitalized for another disease and for which COVID-19 was not the final diagnosis (*n* = 62). In 5 cases, SARS-CoV-2 infection was nosocomial.

SUPPLEMENTAL TABLE 7 Characteristics and Evolution by Clinical Pattern

	Pattern 1 <sup>a</sup> Paucisymptomatic, <i>n</i> = 148)		Pattern 2 <sup>a</sup> (COVID-19 With Hospital Treatment) <i>n</i> = 158		Pattern 3 <sup>a</sup> MIS-C ( <i>n</i> = 29)	Pattern 4 <sup>a</sup> Final Diagnosis Not Related to SARS-CoV-2, <i>n</i> = 62
	LRTI ( <i>n</i> = 95)	Digestive Form ( <i>n</i> = 24)	Isolated Fever ( <i>n</i> = 28)			
Delay between contact and hospitalization in days, median (IQR)	7 (4–12)	11 (7–17)	13 (8–47)	7 (4–8)	34 (23–47)	8 (2–14)
<i>n</i>	56	23	5	10	11	17
Male sex, <i>n</i> (%)	83 (56)	51 (54)	15 (63)	17 (61)	13 (49)	36 (58)
Comorbidities, <i>n</i> (%)	24 (16)	38 (40)	10 (42)	13 (46)	5 (17)	22 (35)
Age, mo, median (IQR)	2 (1–80)	53 (5–150) (NA = 2)	5 (1–115) (NA = 1)	5 (2–113)	116 (56–138)	55 (3–165) (NA = 1)
Age <3 mo, <i>n</i> (%)	85 (57)	18 (19)	10 (11)	13 (46)	0 (0)	16 (26)
Age ≥5 y, <i>n</i> (%)	29 (20)	44 (46)	8 (33)	9 (32)	21 (72)	30 (48)
CRP, mg/L, median (IQR)	3 (1–6)	18 (5–64)	3 (1–16)	6 (3–27)	179 (105–270)	7 (2–34)
Procalcitonin, ng/mL, median (IQR)	0.1 (0.1–0.2)	0.2 (0.1–1.1)	0.1 (0.1–0.2)	0.2 (0.1–0.3)	31.5 (3.3–110)	0.2 (0.1–1.4)
Hemoglobin, g/dL, median (IQR)	12 (11–14)	12 (10–14)	12 (11–13)	11 (10–12)	11 (10–12)	12 (10–13)
Leukocytes, G/L, median (IQR)	7.5 (5.6–10)	9.8 (6.6–16.4)	10.1 (7.6–13.2)	6.9 (4.5–9.4)	11.3 (8.7–16.5)	9.1 (5.4–12.8)
Lymphocytes	3.1 (1.9–4.4)	2.3 (1.5–3.3)	2.7 (1.7–6.6)	2.6 (1.2–3.8)	1.2 (0.7–1.7)	2.1 (1.2–4.1)
Neutrophils	2.7 (1.7–4.1)	5.5 (3.3–9.9)	4.9 (2.7–8.0)	2.6 (1.4–4.8)	9.2 (7.5–12.1)	3.7 (5.4–12.8)
Platelets, G/L, median (IQR)	327 (246–413)	301 (217–383)	339 (251–414)	267 (182–323)	200 (161–273)	274 (208–367)
PICU transfer, <sup>b</sup> <i>n</i> (%)	3 (2)	33 (35)	1 (4)	3 (11)	22 (76)	19 (29)
Severe disease, <i>n</i> (%)	0 (0)	20 (21)	1 (4)	2 (7)	15 (52)	6 (10)
Ventilatory support, <i>n</i> (%)	—	20 (100)	0 (0)	0 (0)	9 (60)	6 (100)
Hemodynamic support, <i>n</i> (%)	—	3 (15)	0 (0)	2 (100)	15 (100)	1 (17)
Deaths, <i>n</i> (%)	0(0)	4 (4)	1 (4)	0 (0)	0 (0)	1 (2)
Length of hospital stay, d, median (IQR)	2 (1–3)	5 (2–9)	3 (2–5)	3.5 (2.5–6)	11 (7–17)	7 (3–20)

NA, not available; —, not applicable.

<sup>a</sup> The following pattern definitions are detailed in the Results section: pattern 1: paucisymptomatic SARS-CoV-2 infection with no hospital treatment required, admitted for clinical surveillance; pattern 2: SARS-CoV-2 infection requiring hospital treatment; pattern 3: hospitalized for another disease and for which COVID-19 was not the final diagnosis. For pattern 2, 4 clinical forms are described, accounting for a total of 176 of 187 cases (94%). The 11 remaining cases from pattern 2 are described in Appendix 3.

<sup>b</sup> PICU transfer means that patients were admitted to PICU either from the emergency department or from a hospital department. Severity was defined as need for either ventilatory or hemodynamic support during hospitalization, or death. The cutoff used for normal CRP was 10 mg/L. Categorical variables are described with numbers (percentages) and quantitative variables with median (IQR).