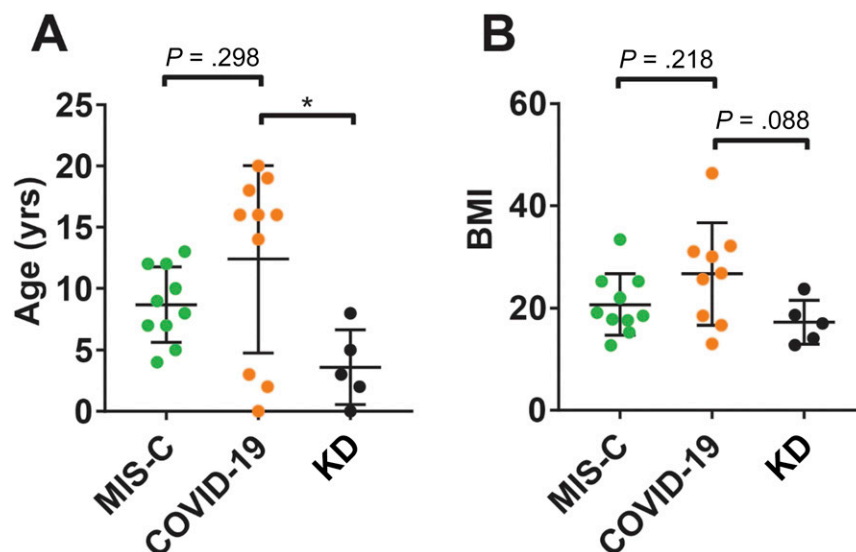
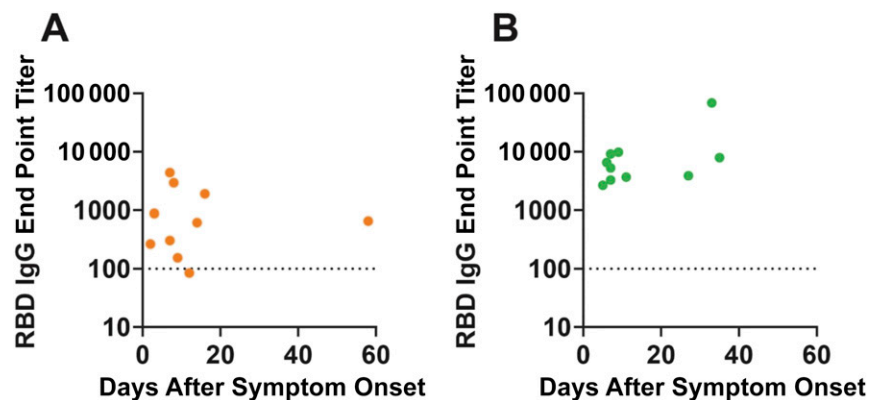


Supplemental Information



SUPPLEMENTAL FIGURE 4

Age (A) and BMI (B) distribution among children hospitalized with MIS-C, COVID-19, and KD. Statistical comparisons were made by using 1-way ANOVA. * $P \leq .05$.



SUPPLEMENTAL FIGURE 5

RBD IgG end point titers versus days after symptom onset for children with COVID-19 (A) or MIS-C (B).

SUPPLEMENTAL TABLE 2 Clinical Data for Hospitalized Controls Who Were Evaluated for COVID-19 or MIS-C

	Control No. 1	Control No. 2	Control No. 3	Control No. 4
Final diagnosis	Brucellosis	EBV-associated HLH	Sepsis	Viral illness
Clinical features overlapping MIS-C				
Fever	Yes	Yes	Yes	Yes
Multiorgan (≥ 2) involvement	Respiratory	Respiratory	Hematologic	Gastrointestinal
	Gastrointestinal Hematologic	Gastrointestinal Hematologic	Dermatologic	Dermatologic
Systemic inflammation	Yes	Yes	Laboratory tests not obtained	Yes
Demographic characteristics				
Age, y	14	1	11	4
Sex	Female	Male	Female	Male
Race	White	Declined	White	Black
Ethnicity	Non-Hispanic	Non-Hispanic	Non-Hispanic	Non-Hispanic
Clinical characteristics				
BMI	29.8	N/A	20.1	20.5
Preexisting medical conditions	Depression	None	Osteosarcoma	None
Immunocompromised	No	New-onset pancytopenia	Chemotherapy, pancytopenia	No
Laboratory values ^a				
White blood cell count, cells $\times 10^3/\mu\text{L}$	20.65	1.93	2.78	18.5
Absolute lymphocyte count, cells per μL	402	606	1180	1477
Platelet count, cells $\times 10^3/\mu\text{L}$	130	82	20	278
Sodium, mmol/L	132	140	139	133
Alanine aminotransferase, U/L	217	522	N/A	13
CRP, mg/dL	22.7	2.9	N/A	11.6
ESR, mm/h	116	10	N/A	N/A
D-dimer, ng/mL	8146	5971	N/A	841
Treatments				
IVIg	No	Yes	No	No
Corticosteroids	No	Yes	No	No
Outcomes				
Duration of hospitalization, d	32	24	7	3
ICU admission	Yes	Yes	Yes	No
Duration of ICU, d	10	3	1	0
Respiratory failure (requiring HFNC or greater)	Yes	Yes	No	No
Shock (requiring inotropes or vasopressors)	No	No	No	No

EBV, Epstein-Barr virus; HFNC, high-flow nasal cannula; HLH, hemophagocytic lymphohistiocytosis; N/A, not applicable.

^a Laboratory values represent the maximum white blood cell count, minimum absolute lymphocyte count, minimum platelet count, minimum serum sodium level, maximum alanine aminotransferase level, maximum CRP level, maximum ESR, and maximum D-dimer level obtained before administration of IVIg (if given) or during hospitalization (if IVIg not given).

SUPPLEMENTAL TABLE 3 Expanded Treatment Information for Children Hospitalized With MIS-C, COVID-19, and KD

	MIS-C (<i>n</i> = 10)	COVID-19 (<i>n</i> = 10)	KD (<i>n</i> = 5)
Remdesivir	1	4	0
Convalescent plasma	0	2	0
Tocilizumab	1	1	0
Anakinra	1	0	0
Hydroxychloroquine	1	1	0