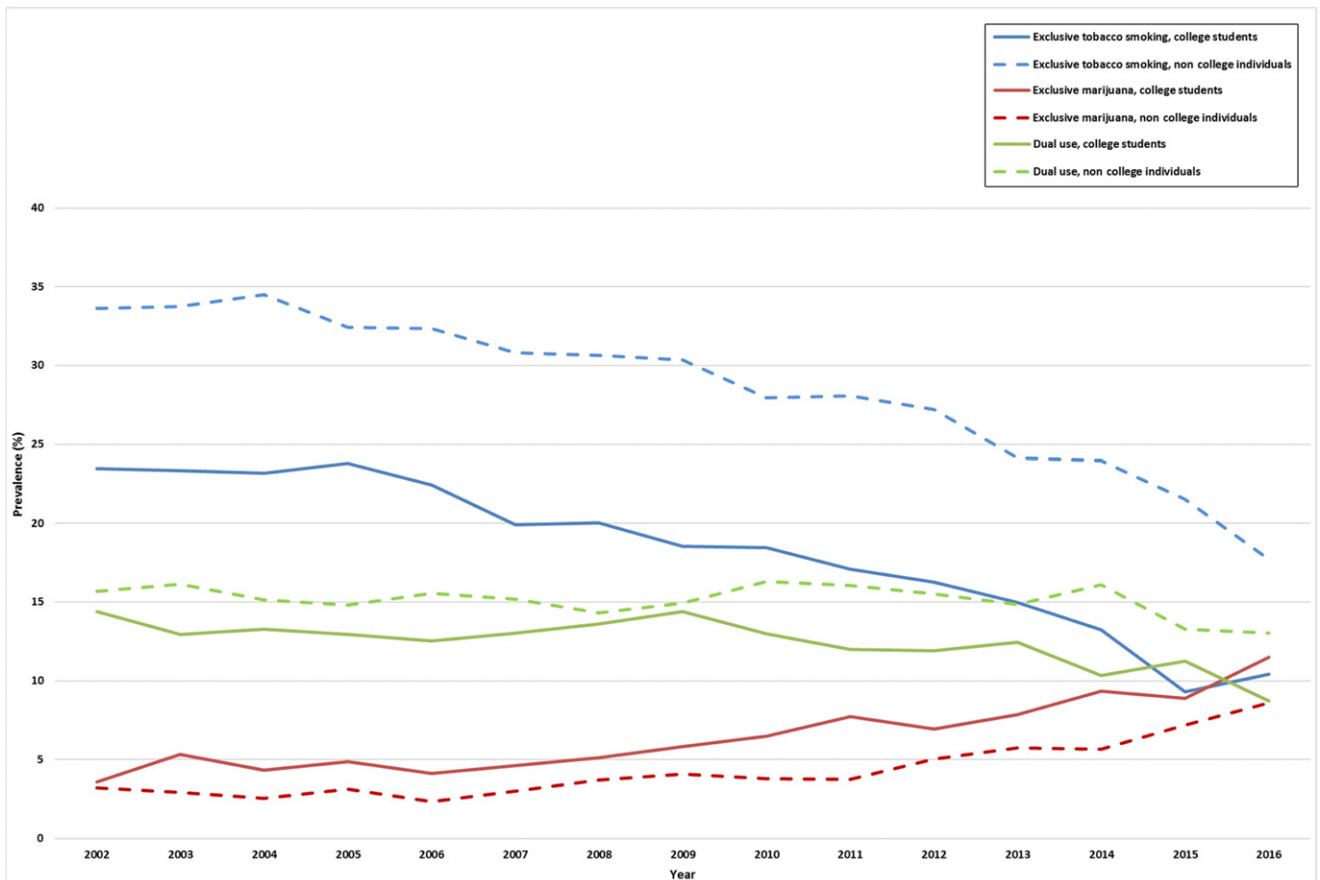


Supplemental Information



SUPPLEMENTAL FIGURE 2

Trends in prevalence of past-30-day exclusive smoked tobacco use, marijuana use, and dual use among college and noncollege young adults aged 18 to 22 years (NSDUH, United States, 2002–2016). Exclusive use of smoked tobacco was defined as use of cigarettes and/or cigars (big cigars, cigarillos, and/or little cigars) without using marijuana. Exclusive use of marijuana was defined as use of marijuana (regardless of the mode of consumption) without using smoked tobacco.