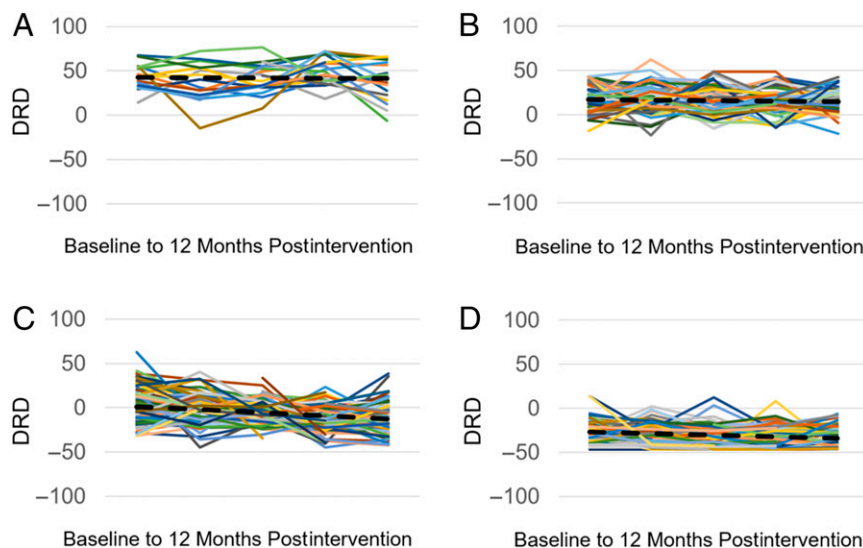


Supplemental Information



SUPPLEMENTAL FIGURE 2

DRD scores by trajectory group. Dotted black lines are model estimates. A, Stable high DRD. B, Stable moderate DRD. C, Improving DRD. D, Low DRD.

SUPPLEMENTAL TABLE 4 Fit and Classification for LCGA Models

Indicators	No. Classes				
	1	2	3	4	5
BIC	11 262.4	10 670.6	10 504.9	10 445.6	10 412.5
AWE	11 237.5	10 648.7	10 474.9	10 413.0	10 377.3
LRT, <i>P</i>	—	<.001	.21	.03	.30
BLRT, <i>P</i>	—	<.001	<.001	<.001	<.001
Entropy	—	0.87	0.83	0.82	0.79
Smallest class, <i>n</i>	—	129	57	19	20

—, not applicable.

SUPPLEMENTAL TABLE 5 DRD Trajectory Groupings and Parameter Estimates

Trajectory Group	<i>n</i> (%)	Starting Point (Intercept)		Rate of Change (Slope)	
		Estimate (SE)	<i>P</i>	Estimate (SE)	<i>P</i>
Stable high	19 (7.2)	42.64 (4.67)	<.001	−0.31 (1.65)	.85
Stable moderate	74 (28.0)	16.89 (2.51)	<.001	−0.48 (0.97)	.62
Improving	89 (33.7)	1.29 (4.50)	.78	−3.47 (1.03)	<.01
Low	82 (31.1)	−26.89 (2.09)	<.001	−1.75 (0.39)	<.001

The DRD outcome variable was centered on the baseline grand mean.