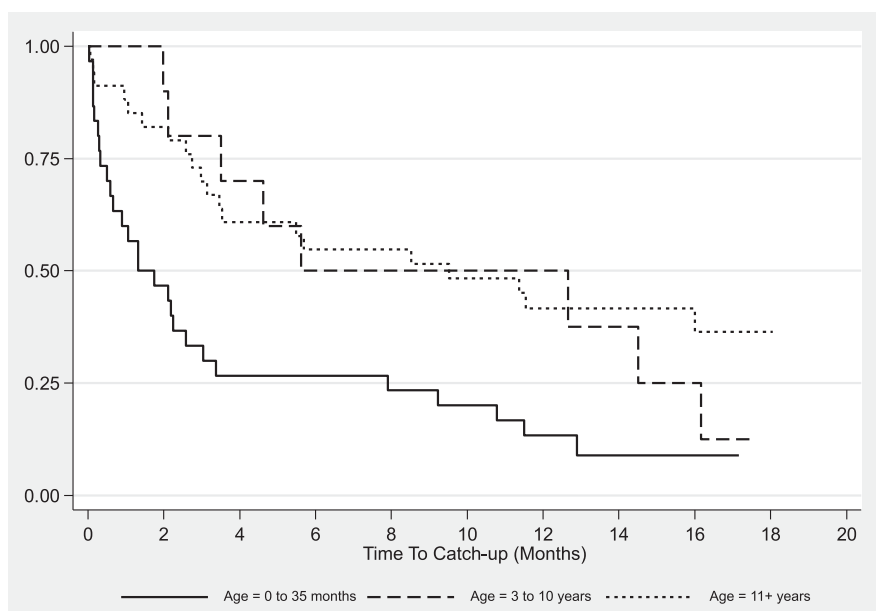


Supplemental Information

SUPPLEMENTAL TABLE 2 Summary of the Number of Clinic Visits for Patients Caught up on Immunizations per CDC Recommendations 18 Months Posthospital Discharge

	Age		
	0-35 mo	3-10 y	≥11 y
Not caught up			
Mean (SD)	2.7 (4.4)	15 (0.53)	2.2 (1.2)
Total No. patients	27	8	20
Median (range)	2 (0-24)	1.5 (1-2)	2 (0-5)
Caught up			
Mean (SD)	2.8 (2.9)	10 (10.4)	3 (2.3)
Total No. patients	5	3	16
Median (range)	1 (0-6)	4 (4-22)	2.5 (0-8)

Patients not caught up on immunizations 18 mo posthospital discharge had a fewer number of clinic visits within the follow-up period compared with patients who became UTD, especially those in the 3- to 10-y-of-age category.



SUPPLEMENTAL FIGURE 5 Kaplan-Meier curve showing the percentage of patients seen in a clinic remaining not caught up per CDC recommendations during the 18-month follow-up period after hospital discharge. Of the 74 patients seen in a clinic during the follow-up period, 55 (74.3%) achieved catch-up status over the follow-up period. Among the 55 patients achieving catch-up status, the median time to receive catch-up immunization was 3.49 months (range: 0.03–18.05 months).